

**Anti-PLCB3 Rabbit Monoclonal Antibody**  
Catalog # ABO15858

**Specification**

---

**Anti-PLCB3 Rabbit Monoclonal Antibody - Product Information**

Application	WB, IHC
Primary Accession	<a href="#">Q01970</a>
Host	Rabbit
Isotype	IgG
Reactivity	Human
Clonality	Monoclonal
Format	Liquid

**Description**

Anti-PLCB3 Rabbit Monoclonal Antibody . Tested in WB, IHC applications. This antibody reacts with Human.

**Anti-PLCB3 Rabbit Monoclonal Antibody - Additional Information**

**Gene ID** 5331

**Other Names**

1-phosphatidylinositol 4, 5-bisphosphate phosphodiesterase beta-3, 3.1.4.11, Phosphoinositide phospholipase C-beta-3, Phospholipase C-beta-3, PLC-beta-3, PLCB3  
{ECO:0000312|EMBL:AAA77683.1}

**Calculated MW**

150 kDa KDa

**Application Details**

WB 1:500-1:2000<br>IHC 1:50-1:200

**Contents**

Rabbit IgG in phosphate buffered saline, pH 7.4, 150mM NaCl, 0.02% sodium azide and 50% glycerol, 0.4-0.5mg/ml BSA.

**Immunogen**

A synthesized peptide derived from human PLCB3

**Purification**

Affinity-chromatography

**Storage**

**Store at -20°C for one year. For short term storage and frequent use, store at 4°C for up to one month. Avoid repeated freeze-thaw cycles.**

**Anti-PLCB3 Rabbit Monoclonal Antibody - Protein Information**

**Name** PLCB3 {ECO:0000312|EMBL:AAA77683.1}

### Function

The production of the second messenger molecules diacylglycerol (DAG) and inositol 1,4,5-trisphosphate (IP3) is mediated by activated phosphatidylinositol-specific phospholipase C enzymes (PubMed:<a href="http://www.uniprot.org/citations/29122926" target="\_blank">29122926</a>, PubMed:<a href="http://www.uniprot.org/citations/9188725" target="\_blank">9188725</a>). In neutrophils, participates in a phospholipase C-activating N-formyl peptide-activated GPCR (G protein- coupled receptor) signaling pathway by promoting RASGRP4 activation by DAG, to promote neutrophil functional responses (By similarity).

### Cellular Location

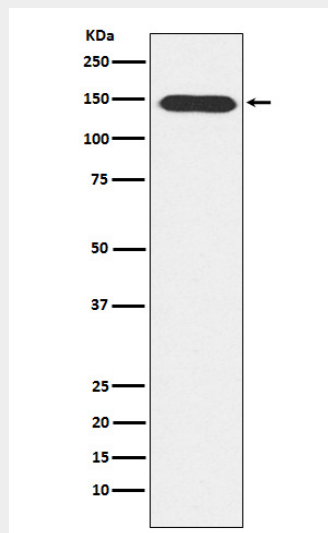
Cytoplasm. Membrane {ECO:0000250|UniProtKB:Q99JE6}. Nucleus {ECO:0000250|UniProtKB:P51432} Note=And particulate fractions. {ECO:0000250|UniProtKB:Q99JE6}

## Anti-PLCB3 Rabbit Monoclonal Antibody - Protocols

Provided below are standard protocols that you may find useful for product applications.

- [Western Blot](#)
- [Blocking Peptides](#)
- [Dot Blot](#)
- [Immunohistochemistry](#)
- [Immunofluorescence](#)
- [Immunoprecipitation](#)
- [Flow Cytometry](#)
- [Cell Culture](#)

## Anti-PLCB3 Rabbit Monoclonal Antibody - Images



Western blot analysis of PLCB3 expression in A431 cell lysate.