

**Anti-STC1 Rabbit Monoclonal Antibody**  
Catalog # ABO15856

**Specification**

---

**Anti-STC1 Rabbit Monoclonal Antibody - Product Information**

Application	WB, IP
Primary Accession	<a href="#">P52823</a>
Host	Rabbit
Isotype	IgG
Reactivity	Human
Clonality	Monoclonal
Format	Liquid

**Description**

Anti-STC1 Rabbit Monoclonal Antibody . Tested in WB, IP applications. This antibody reacts with Human.

**Anti-STC1 Rabbit Monoclonal Antibody - Additional Information**

**Gene ID** 6781

**Other Names**

Stanniocalcin-1, STC-1, STC1, STC

**Calculated MW**

31-37 kDa KDa

**Application Details**

WB 1:500-1:200<br>IP 1:50

**Contents**

Rabbit IgG in phosphate buffered saline, pH 7.4, 150mM NaCl, 0.02% sodium azide and 50% glycerol, 0.4-0.5mg/ml BSA.

**Immunogen**

A synthesized peptide derived from human STC1

**Purification**

Affinity-chromatography

Storage

**Store at -20°C for one year. For short term storage and frequent use, store at 4°C for up to one month. Avoid repeated freeze-thaw cycles.**

**Anti-STC1 Rabbit Monoclonal Antibody - Protein Information**

**Name** STC1

## Synonyms STC

### Function

Stimulates renal phosphate reabsorption, and could therefore prevent hypercalcemia.

### Cellular Location

Secreted.

### Tissue Location

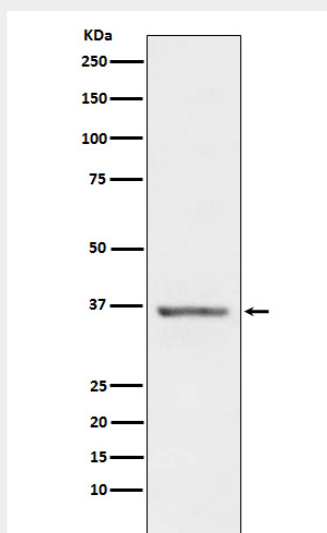
Expressed in most tissues, with the highest levels in ovary, prostate, heart, kidney and thyroid. In the kidney, expression is confined to the nephron, specifically in the distal convoluted tubule and in the collecting tubule. Not detected in the brain, liver, spleen, peripheral blood leukocytes and adrenal medulla

## Anti-STC1 Rabbit Monoclonal Antibody - Protocols

Provided below are standard protocols that you may find useful for product applications.

- [Western Blot](#)
- [Blocking Peptides](#)
- [Dot Blot](#)
- [Immunohistochemistry](#)
- [Immunofluorescence](#)
- [Immunoprecipitation](#)
- [Flow Cytometry](#)
- [Cell Culture](#)

## Anti-STC1 Rabbit Monoclonal Antibody - Images



Western blot analysis of STC1 expression in Human Prostate lysate.