

**Anti-PLCG2 Rabbit Monoclonal Antibody**  
Catalog # ABO15854**Specification****Anti-PLCG2 Rabbit Monoclonal Antibody - Product Information**

Application	WB, IHC, IP, FC
Primary Accession	<a href="#">P16885</a>
Host	Rabbit
Isotype	IgG
Reactivity	Human
Clonality	Monoclonal
Format	Liquid

**Description**

Anti-PLCG2 Rabbit Monoclonal Antibody . Tested in WB, IHC, IP, Flow Cytometry applications. This antibody reacts with Human.

**Anti-PLCG2 Rabbit Monoclonal Antibody - Additional Information**

**Gene ID** 5336

**Other Names**

1-phosphatidylinositol 4, 5-bisphosphate phosphodiesterase gamma-2, 3.1.4.11, Phosphoinositide phospholipase C-gamma-2, Phospholipase C-IV, PLC-IV, Phospholipase C-gamma-2, PLC-gamma-2, PLCG2 ([HGNC:9066](http://www.genenames.org/cgi-bin/gene_symbol_report?hgnc_id=9066))

**Calculated MW**

148 kDa KDa

**Application Details**

WB 1:1000-1:5000<br>IHC 1:50-1:200<br>IP 1:50<br>FC 1:100

**Contents**

Rabbit IgG in phosphate buffered saline, pH 7.4, 150mM NaCl, 0.02% sodium azide and 50% glycerol, 0.4-0.5mg/ml BSA.

**Immunogen**

A synthesized peptide derived from human PLCG2

**Purification**

Affinity-chromatography

**Storage**

**Store at -20°C for one year. For short term storage and frequent use, store at 4°C for up to one month. Avoid repeated freeze-thaw cycles.**

**Anti-PLCG2 Rabbit Monoclonal Antibody - Protein Information**

**Name** PLCG2 ([HGNC:9066](#))

**Function**

The production of the second messenger molecules diacylglycerol (DAG) and inositol 1,4,5-trisphosphate (IP3) is mediated by activated phosphatidylinositol-specific phospholipase C enzymes. It is a crucial enzyme in transmembrane signaling.

**Cellular Location**

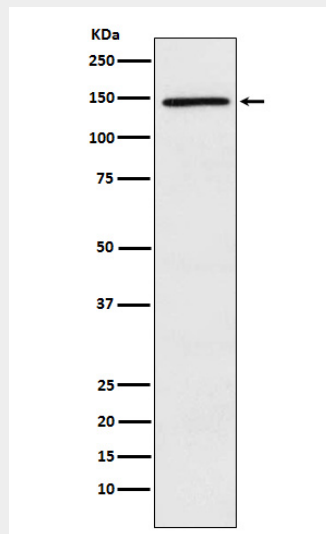
Membrane raft {ECO:0000250|UniProtKB:Q8CIH5}.

**Anti-PLCG2 Rabbit Monoclonal Antibody - Protocols**

Provided below are standard protocols that you may find useful for product applications.

- [Western Blot](#)
- [Blocking Peptides](#)
- [Dot Blot](#)
- [Immunohistochemistry](#)
- [Immunofluorescence](#)
- [Immunoprecipitation](#)
- [Flow Cytometry](#)
- [Cell Culture](#)

**Anti-PLCG2 Rabbit Monoclonal Antibody - Images**



Western blot analysis of PLCG 2 expression in Ramos cell lysate.