

Anti-Thromboxane synthase Rabbit Monoclonal Antibody
Catalog # ABO15844**Specification****Anti-Thromboxane synthase Rabbit Monoclonal Antibody - Product Information**

Application	WB
Primary Accession	P24557
Host	Rabbit
Isotype	IgG
Reactivity	Human, Mouse
Clonality	Monoclonal
Format	Liquid

Description

Anti-Thromboxane synthase Rabbit Monoclonal Antibody . Tested in WB application. This antibody reacts with Human, Mouse.

Anti-Thromboxane synthase Rabbit Monoclonal Antibody - Additional Information

Gene ID 6916

Other Names

Thromboxane-A synthase, TXA synthase, TXS, 5.3.99.5, Cytochrome P450 5A1, Hydroperoxy icosatetraenoate dehydratase, 4.2.1.152, TBXAS1, CYP5, CYP5A1 {ECO:0000303|PubMed:11465543}, TXAS

Calculated MW

54 kDa KDa

Application Details

WB 1:500-1:2000

Contents

Rabbit IgG in phosphate buffered saline, pH 7.4, 150mM NaCl, 0.02% sodium azide and 50% glycerol, 0.4-0.5mg/ml BSA.

Immunogen

A synthesized peptide derived from human Thromboxane synthase

Purification

Affinity-chromatography

Storage

Store at -20°C for one year. For short term storage and frequent use, store at 4°C for up to one month. Avoid repeated freeze-thaw cycles.

Anti-Thromboxane synthase Rabbit Monoclonal Antibody - Protein Information

Name TBXAS1**Synonyms** CYP5, CYP5A1 {ECO:0000303|PubMed:1146554**Function**

Catalyzes the conversion of prostaglandin H2 (PGH2) to thromboxane A2 (TXA2), a potent inducer of blood vessel constriction and platelet aggregation (PubMed:11097184, PubMed:11297515, PubMed:22735388, PubMed:24009185, PubMed:8436233, PubMed:9873013). Cleaves also PGH2 to 12-hydroxy-heptadecatrienoic acid (12-HHT) and malondialdehyde, which is known to act as a mediator of DNA damage. 12- HHT and malondialdehyde are formed stoichiometrically in the same amounts as TXA2 (PubMed:11297515, PubMed:22735388, PubMed:9873013). Additionally, displays dehydratase activity, toward (15S)-hydroperoxy- (5Z,8Z,11Z,13E)-eicosatetraenoate (15(S)-HPETE) producing 15-KETE and 15-HETE (PubMed:17459323).

Cellular Location

Endoplasmic reticulum membrane; Multi-pass membrane protein

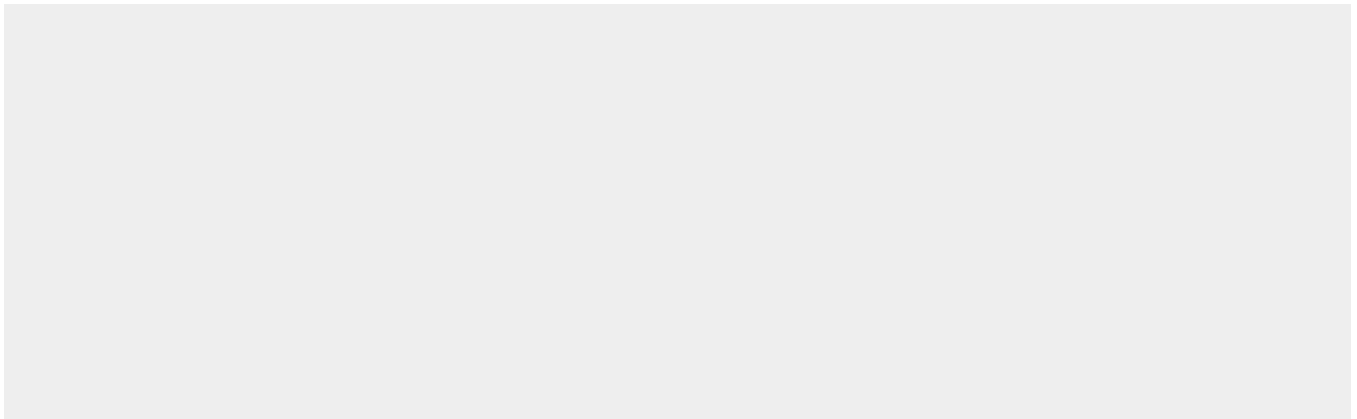
Tissue Location

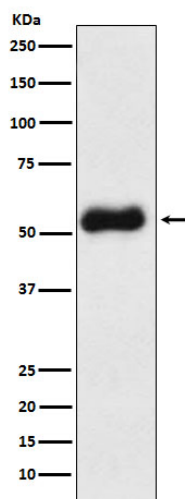
Platelets, lung, kidney, spleen, macrophages and lung fibroblasts.

Anti-Thromboxane synthase Rabbit Monoclonal Antibody - Protocols

Provided below are standard protocols that you may find useful for product applications.

- [Western Blot](#)
- [Blocking Peptides](#)
- [Dot Blot](#)
- [Immunohistochemistry](#)
- [Immunofluorescence](#)
- [Immunoprecipitation](#)
- [Flow Cytometry](#)
- [Cell Culture](#)

Anti-Thromboxane synthase Rabbit Monoclonal Antibody - Images



Western blot analysis of Thromboxane synthase expression in Human fetal liver lysate.