

Anti-CHRNA5 Rabbit Monoclonal Antibody Catalog # ABO15839

Specification

Anti-CHRNA5 Rabbit Monoclonal Antibody - Product Information

Application	WB, IP, FC
Primary Accession	P30532
Host	Rabbit
Isotype	IgG
Reactivity	Rat, Human, Mouse
Clonality	Monoclonal
Format	Liquid

Description

Anti-CHRNA5 Rabbit Monoclonal Antibody . Tested in WB, IP, Flow Cytometry applications. This antibody reacts with Human, Mouse, Rat.

Anti-CHRNA5 Rabbit Monoclonal Antibody - Additional Information

Gene ID 1138

Other Names

Neuronal acetylcholine receptor subunit alpha-5, CHRNA5, NACHRA5

Calculated MW

55 kDa KDa

Application Details

WB 1:500-1:2000
IP 1:50
FC 1:50

Contents

Rabbit IgG in phosphate buffered saline, pH 7.4, 150mM NaCl, 0.02% sodium azide and 50% glycerol, 0.4-0.5mg/ml BSA.

Immunogen

A synthesized peptide derived from human CHRNA5

Purification

Affinity-chromatography

Storage

Store at -20°C for one year. For short term storage and frequent use, store at 4°C for up to one month. Avoid repeated freeze-thaw cycles.

Anti-CHRNA5 Rabbit Monoclonal Antibody - Protein Information

Name CHRNA5

Synonyms NACHRA5

Function

After binding acetylcholine, the AChR responds by an extensive change in conformation that affects all subunits and leads to opening of an ion-conducting channel across the plasma membrane.

Cellular Location

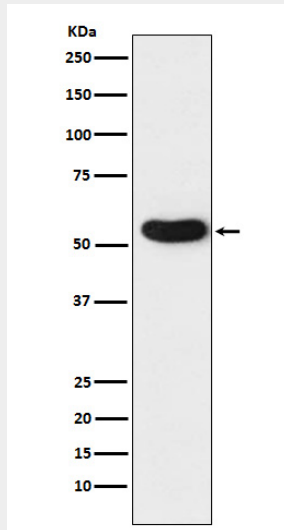
Postsynaptic cell membrane; Multi-pass membrane protein. Cell membrane; Multi-pass membrane protein

Anti-CHRNA5 Rabbit Monoclonal Antibody - Protocols

Provided below are standard protocols that you may find useful for product applications.

- [Western Blot](#)
- [Blocking Peptides](#)
- [Dot Blot](#)
- [Immunohistochemistry](#)
- [Immunofluorescence](#)
- [Immunoprecipitation](#)
- [Flow Cytometry](#)
- [Cell Culture](#)

Anti-CHRNA5 Rabbit Monoclonal Antibody - Images



Western blot analysis of CHRNA5 expression in A431 cell lysate.