

## Anti-GGT1 Rabbit Monoclonal Antibody Catalog # ABO15827

### Specification

---

#### Anti-GGT1 Rabbit Monoclonal Antibody - Product Information

Application	WB, IHC
Primary Accession	<a href="#">P19440</a>
Host	Rabbit
Isotype	IgG
Reactivity	Human
Clonality	Monoclonal
Format	Liquid

#### Description

Anti-GGT1 Rabbit Monoclonal Antibody . Tested in WB, IHC applications. This antibody reacts with Human.

#### Anti-GGT1 Rabbit Monoclonal Antibody - Additional Information

Gene ID 2678

#### Other Names

Glutathione hydrolase 1 proenzyme, 3.4.19.13, Gamma-glutamyltransferase 1, Gamma-glutamyltranspeptidase 1, GGT 1, 2.3.2.2, Leukotriene-C4 hydrolase, 3.4.19.14, CD224, Glutathione hydrolase 1 heavy chain, Glutathione hydrolase 1 light chain, GGT1, GGT

#### Calculated MW

50-60 kDa KDa

#### Application Details

WB 1:500-1:2000<br>IHC 1:50-1:200

#### Contents

Rabbit IgG in phosphate buffered saline, pH 7.4, 150mM NaCl, 0.02% sodium azide and 50% glycerol, 0.4-0.5mg/ml BSA.

#### Immunogen

A synthesized peptide derived from human GGT1

#### Purification

Affinity-chromatography

#### Storage

Store at -20°C for one year. For short term storage and frequent use, store at 4°C for up to one month. Avoid repeated freeze-thaw cycles.

#### Anti-GGT1 Rabbit Monoclonal Antibody - Protein Information

**Name** GGT1**Synonyms** GGT**Function**

Cleaves the gamma-glutamyl bond of extracellular glutathione (gamma-Glu-Cys-Gly), glutathione conjugates (such as maresin conjugate (13R)-S-glutathionyl-(14S)-hydroxy-(4Z,7Z,9E,11E,16Z,19Z)- docosahexaenoate, MCTR1) and other gamma-glutamyl compounds (such as leukotriene C4, LTC4) (PubMed:<a href="http://www.uniprot.org/citations/17924658" target="\_blank">17924658</a>, PubMed:<a href="http://www.uniprot.org/citations/21447318" target="\_blank">21447318</a>, PubMed:<a href="http://www.uniprot.org/citations/27791009" target="\_blank">27791009</a>). The metabolism of glutathione by GGT1 releases free glutamate and the dipeptide cysteinyl-glycine, which is hydrolyzed to cysteine and glycine by dipeptidases (PubMed:<a href="http://www.uniprot.org/citations/27791009" target="\_blank">27791009</a>). In the presence of high concentrations of dipeptides and some amino acids, can also catalyze a transpeptidation reaction, transferring the gamma-glutamyl moiety to an acceptor amino acid to form a new gamma-glutamyl compound (PubMed:<a href="http://www.uniprot.org/citations/17924658" target="\_blank">17924658</a>, PubMed:<a href="http://www.uniprot.org/citations/21447318" target="\_blank">21447318</a>, PubMed:<a href="http://www.uniprot.org/citations/7673200" target="\_blank">7673200</a>, PubMed:<a href="http://www.uniprot.org/citations/7759490" target="\_blank">7759490</a>, PubMed:<a href="http://www.uniprot.org/citations/8095045" target="\_blank">8095045</a>, PubMed:<a href="http://www.uniprot.org/citations/8827453" target="\_blank">8827453</a>). Contributes to cysteine homeostasis, glutathione homeostasis and in the conversion of the leukotriene LTC4 to LTD4.

**Cellular Location**

Cell membrane; Single-pass type II membrane protein {ECO:0000250|UniProtKB:P07314}

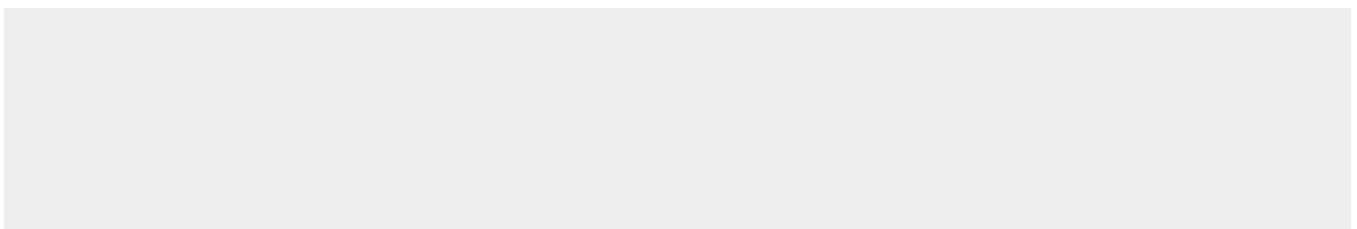
**Tissue Location**

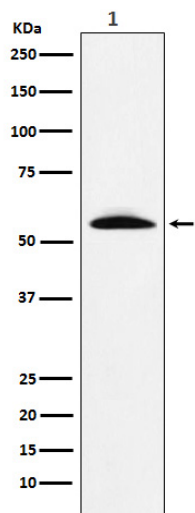
Detected in fetal and adult kidney and liver, adult pancreas, stomach, intestine, placenta and lung. There are several other tissue-specific forms that arise from alternative promoter usage but that produce the same protein

**Anti-GGT1 Rabbit Monoclonal Antibody - Protocols**

Provided below are standard protocols that you may find useful for product applications.

- [Western Blot](#)
- [Blocking Peptides](#)
- [Dot Blot](#)
- [Immunohistochemistry](#)
- [Immunofluorescence](#)
- [Immunoprecipitation](#)
- [Flow Cytometry](#)
- [Cell Culture](#)

**Anti-GGT1 Rabbit Monoclonal Antibody - Images**



Western blot analysis of GGT1 expression in Human fetal liver lysate.