

Anti-CSNK1A1 Rabbit Monoclonal Antibody Catalog # ABO15825

Specification

Anti-CSNK1A1 Rabbit Monoclonal Antibody - Product Information

Application	WB
Primary Accession	P48729
Host	Rabbit
Isotype	IgG
Reactivity	Rat, Human, Mouse
Clonality	Monoclonal
Format	Liquid

Description

Anti-CSNK1A1 Rabbit Monoclonal Antibody . Tested in WB application. This antibody reacts with Human, Mouse, Rat.

Anti-CSNK1A1 Rabbit Monoclonal Antibody - Additional Information

Gene ID 1452

Other Names

Casein kinase I isoform alpha, CKI-alpha, 2.7.11.1, CK1, CSNK1A1

Calculated MW

35 kDa KDa

Application Details

WB 1:500-1:2000

Contents

Rabbit IgG in phosphate buffered saline, pH 7.4, 150mM NaCl, 0.02% sodium azide and 50% glycerol, 0.4-0.5mg/ml BSA.

Immunogen

A synthesized peptide derived from human CSNK1A1

Purification

Affinity-chromatography

Storage

Store at -20°C for one year. For short term storage and frequent use, store at 4°C for up to one month. Avoid repeated freeze-thaw cycles.

Anti-CSNK1A1 Rabbit Monoclonal Antibody - Protein Information

Name CSNK1A1

Function

Casein kinases are operationally defined by their preferential utilization of acidic proteins such as caseins as substrates (PubMed:11955436, PubMed:1409656, PubMed:18305108, PubMed:23902688). It can phosphorylate a large number of proteins (PubMed:11955436, PubMed:1409656, PubMed:18305108, PubMed:23902688). Participates in Wnt signaling (PubMed:11955436). Phosphorylates CTNNB1 at 'Ser-45' (PubMed:11955436). May phosphorylate PER1 and PER2 (By similarity). May play a role in segregating chromosomes during mitosis (PubMed:1409656). May play a role in keratin cytoskeleton disassembly and thereby, it may regulate epithelial cell migration (PubMed:23902688). Acts as a positive regulator of mTORC1 and mTORC2 signaling in response to nutrients by mediating phosphorylation of DEPTOR inhibitor (PubMed:22017875, PubMed:22017877). Acts as an inhibitor of NLRP3 inflammasome assembly by mediating phosphorylation of NLRP3 (By similarity).

Cellular Location

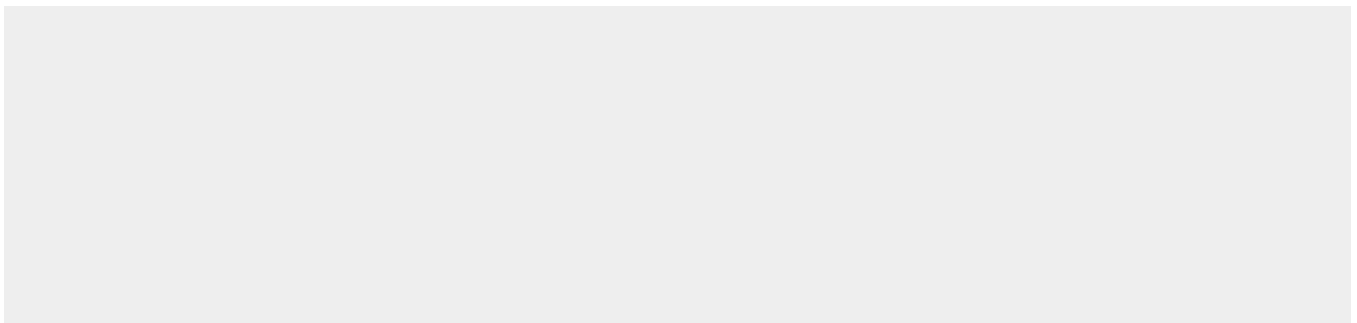
Cytoplasm. Cytoplasm, cytoskeleton, microtubule organizing center, centrosome. Chromosome, centromere, kinetochore. Nucleus speckle. Cytoplasm, cytoskeleton, cilium basal body {ECO:0000250|UniProtKB:Q8BK63}. Cytoplasm, cytoskeleton, spindle {ECO:0000250|UniProtKB:Q8BK63}. Note=Localizes to the centrosome in interphase cells, and to kinetochore fibers during mitosis. Also recruited to the keratin cytoskeleton (PubMed:23902688)

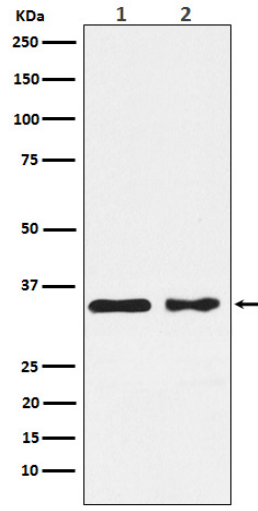
Anti-CSNK1A1 Rabbit Monoclonal Antibody - Protocols

Provided below are standard protocols that you may find useful for product applications.

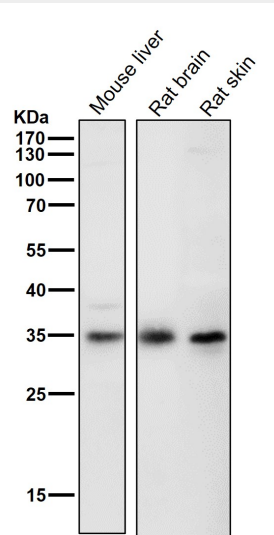
- [Western Blot](#)
- [Blocking Peptides](#)
- [Dot Blot](#)
- [Immunohistochemistry](#)
- [Immunofluorescence](#)
- [Immunoprecipitation](#)
- [Flow Cytometry](#)
- [Cell Culture](#)

Anti-CSNK1A1 Rabbit Monoclonal Antibody - Images

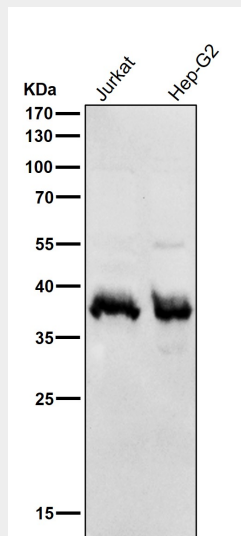




Western blot analysis of CSNK1A1 expression in (1) MCF7 cell lysate; (2) NIH/3T3 cell lysate.



All lanes use the Antibody at 1:3k dilution for 1 hour at room temperature.



All lanes use the Antibody at 1:3k dilution for 1 hour at room temperature.