

## Anti-STXBP1 Rabbit Monoclonal Antibody Catalog # ABO15819

### Specification

---

#### Anti-STXBP1 Rabbit Monoclonal Antibody - Product Information

Application	WB, IHC, IF, ICC
Primary Accession	<a href="#">P61764</a>
Host	Rabbit
Isotype	IgG
Reactivity	Rat, Human, Mouse
Clonality	Monoclonal
Format	Liquid

#### Description

Anti-STXBP1 Rabbit Monoclonal Antibody . Tested in WB, IHC, ICC/IF applications. This antibody reacts with Human, Mouse, Rat.

#### Anti-STXBP1 Rabbit Monoclonal Antibody - Additional Information

Gene ID 6812

#### Other Names

Syntaxin-binding protein 1, MUNC18-1, N-Sec1, Protein unc-18 homolog 1, Unc18-1, Protein unc-18 homolog A, Unc-18A, p67, STXBP1, UNC18A

#### Calculated MW

67 kDa KDa

#### Application Details

WB 1:1000-1:5000<br>IHC 1:50-1:200<br>ICC/IF 1:50-1:200

#### Contents

Rabbit IgG in phosphate buffered saline, pH 7.4, 150mM NaCl, 0.02% sodium azide and 50% glycerol, 0.4-0.5mg/ml BSA.

#### Immunogen

A synthesized peptide derived from human STXBP1

#### Purification

Affinity-chromatography

Storage

**Store at -20°C for one year. For short term storage and frequent use, store at 4°C for up to one month. Avoid repeated freeze-thaw cycles.**

#### Anti-STXBP1 Rabbit Monoclonal Antibody - Protein Information

Name STXBP1

## Synonyms UNC18A

### Function

Participates in the regulation of synaptic vesicle docking and fusion through interaction with GTP-binding proteins (By similarity). Essential for neurotransmission and binds syntaxin, a component of the synaptic vesicle fusion machinery probably in a 1:1 ratio. Can interact with syntaxins 1, 2, and 3 but not syntaxin 4. Involved in the release of neurotransmitters from neurons through interacting with SNARE complex component STX1A and mediating the assembly of the SNARE complex at synaptic membranes (By similarity). May play a role in determining the specificity of intracellular fusion reactions.

### Cellular Location

Cytoplasm, cytosol. Membrane; Peripheral membrane protein

### Tissue Location

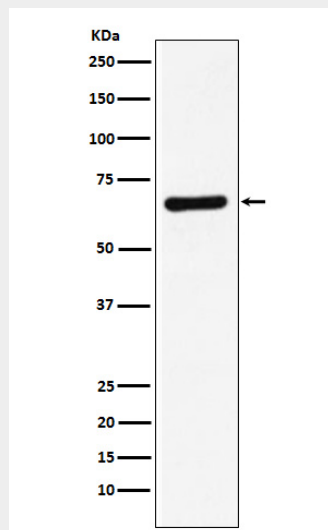
Brain and spinal cord. Highly enriched in axons.

## Anti-STXBP1 Rabbit Monoclonal Antibody - Protocols

Provided below are standard protocols that you may find useful for product applications.

- [Western Blot](#)
- [Blocking Peptides](#)
- [Dot Blot](#)
- [Immunohistochemistry](#)
- [Immunofluorescence](#)
- [Immunoprecipitation](#)
- [Flow Cytometry](#)
- [Cell Culture](#)

## Anti-STXBP1 Rabbit Monoclonal Antibody - Images



Western blot analysis of STXBP1 expression in HeLa cell lysate.