

Anti-ACHA4 Rabbit Monoclonal Antibody
Catalog # ABO15818

Specification

Anti-ACHA4 Rabbit Monoclonal Antibody - Product Information

Application	WB, IP
Primary Accession	P43681
Host	Rabbit
Isotype	IgG
Reactivity	Rat, Human, Mouse
Clonality	Monoclonal
Format	Liquid

Description

Anti-ACHA4 Rabbit Monoclonal Antibody . Tested in WB, IP applications. This antibody reacts with Human, Mouse, Rat.

Anti-ACHA4 Rabbit Monoclonal Antibody - Additional Information

Gene ID 1137

Other Names

Neuronal acetylcholine receptor subunit alpha-4, CHRNA4, NACRA4

Calculated MW

70 kDa KDa

Application Details

WB 1:1000-1:5000
IP 1:50

Contents

Rabbit IgG in phosphate buffered saline, pH 7.4, 150mM NaCl, 0.02% sodium azide and 50% glycerol, 0.4-0.5mg/ml BSA.

Immunogen

A synthesized peptide derived from human ACHA4

Purification

Affinity-chromatography

Storage

Store at -20°C for one year. For short term storage and frequent use, store at 4°C for up to one month. Avoid repeated freeze-thaw cycles.

Anti-ACHA4 Rabbit Monoclonal Antibody - Protein Information

Name CHRNA4

Synonyms NACRA4

Function

After binding acetylcholine, the AChR responds by an extensive change in conformation that affects all subunits and leads to opening of an ion-conducting channel across the plasma membrane permeable to sodium ions.

Cellular Location

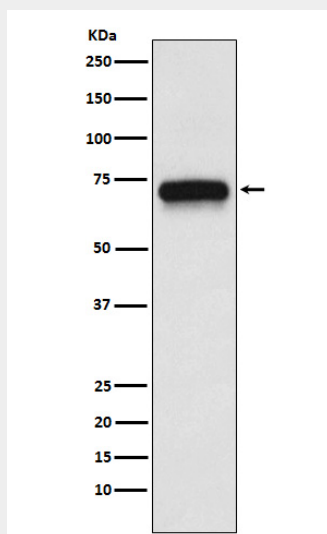
Postsynaptic cell membrane; Multi-pass membrane protein. Cell membrane; Multi-pass membrane protein. Cell membrane; Lipid-anchor

Anti-ACHA4 Rabbit Monoclonal Antibody - Protocols

Provided below are standard protocols that you may find useful for product applications.

- [Western Blot](#)
- [Blocking Peptides](#)
- [Dot Blot](#)
- [Immunohistochemistry](#)
- [Immunofluorescence](#)
- [Immunoprecipitation](#)
- [Flow Cytometry](#)
- [Cell Culture](#)

Anti-ACHA4 Rabbit Monoclonal Antibody - Images



Western blot analysis of ACHA4 expression in SH-SY5Y cell lysate.