

**Anti-Angiotensinogen Rabbit Monoclonal Antibody**  
Catalog # ABO15817**Specification****Anti-Angiotensinogen Rabbit Monoclonal Antibody - Product Information**

Application	WB, IF, ICC, IP, FC
Primary Accession	<a href="#">P01019</a>
Host	Rabbit
Isotype	IgG
Reactivity	Human
Clonality	Monoclonal
Format	Liquid

**Description**

Anti-Angiotensinogen Rabbit Monoclonal Antibody . Tested in WB, ICC/IF, IP, Flow Cytometry applications. This antibody reacts with Human.

**Anti-Angiotensinogen Rabbit Monoclonal Antibody - Additional Information**

**Gene ID** 183

**Other Names**

Angiotensinogen, Serpin A8, Angiotensin-1, Angiotensin 1-10, Angiotensin I, Ang I, Angiotensin-2, Angiotensin 1-8, Angiotensin II, Ang II, Angiotensin-3, Angiotensin 2-8, Angiotensin III, Ang III, Des-Asp[1]-angiotensin II, Angiotensin-4, Angiotensin 3-8, Angiotensin IV, Ang IV, Angiotensin 1-9, Angiotensin 1-7, Angiotensin 1-5, Angiotensin 1-4, AGT ([http://www.genenames.org/cgi-bin/gene\\_symbol\\_report?hgnc\\_id=333](http://www.genenames.org/cgi-bin/gene_symbol_report?hgnc_id=333) target="\_blank">HGNC:333</a>), SERPINA8

**Calculated MW**

53-55 kDa KDa

**Application Details**

WB 1:1000-1:5000<br>ICC/IF 1:100-1:500<br>IP 1:50<br>FC 1:100

**Contents**

Rabbit IgG in phosphate buffered saline, pH 7.4, 150mM NaCl, 0.02% sodium azide and 50% glycerol, 0.4-0.5mg/ml BSA.

**Immunogen**

A synthesized peptide derived from human Angiotensinogen

**Purification**

Affinity-chromatography

**Storage**

Store at -20°C for one year. For short term storage and frequent use, store at 4°C for up to one month. Avoid repeated freeze-thaw cycles.

## Anti-Angiotensinogen Rabbit Monoclonal Antibody - Protein Information

**Name** AGT ([HGNC:333](#))

**Synonyms** SERPINA8

### Function

Essential component of the renin-angiotensin system (RAS), a potent regulator of blood pressure, body fluid and electrolyte homeostasis.

### Cellular Location

Secreted

### Tissue Location

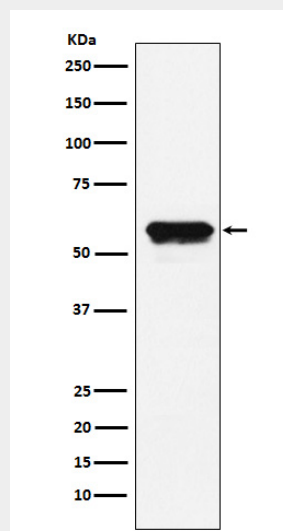
Expressed by the liver and secreted in plasma.

## Anti-Angiotensinogen Rabbit Monoclonal Antibody - Protocols

Provided below are standard protocols that you may find useful for product applications.

- [Western Blot](#)
- [Blocking Peptides](#)
- [Dot Blot](#)
- [Immunohistochemistry](#)
- [Immunofluorescence](#)
- [Immunoprecipitation](#)
- [Flow Cytometry](#)
- [Cell Culture](#)

## Anti-Angiotensinogen Rabbit Monoclonal Antibody - Images



Western blot analysis of Angiotensinogen expression in HepG2 cell lysate.