

## Anti-MAGE 1 Rabbit Monoclonal Antibody Catalog # ABO15813

### Specification

---

#### Anti-MAGE 1 Rabbit Monoclonal Antibody - Product Information

Application	WB, IF, ICC, FC
Primary Accession	<a href="#">P43355</a>
Host	Rabbit
Isotype	IgG
Reactivity	Rat, Human, Mouse
Clonality	Monoclonal
Format	Liquid

#### Description

Anti-MAGE 1 Rabbit Monoclonal Antibody . Tested in WB, ICC/IF, Flow Cytometry applications. This antibody reacts with Human, Mouse, Rat.

#### Anti-MAGE 1 Rabbit Monoclonal Antibody - Additional Information

**Gene ID** 4100

#### Other Names

Melanoma-associated antigen 1, Antigen MZ2-E, Cancer/testis antigen 1.1, CT1.1, MAGE-1 antigen, MAGEA1, MAGE1, MAGE1A

#### Calculated MW

46 kDa KDa

#### Application Details

WB 1:500-1:2000<br>ICC/IF 1:50-1:200<br>FC 1:50

#### Contents

Rabbit IgG in phosphate buffered saline, pH 7.4, 150mM NaCl, 0.02% sodium azide and 50% glycerol, 0.4-0.5mg/ml BSA.

#### Immunogen

A synthesized peptide derived from human MAGE 1

#### Purification

Affinity-chromatography

#### Storage

**Store at -20°C for one year. For short term storage and frequent use, store at 4°C for up to one month. Avoid repeated freeze-thaw cycles.**

#### Anti-MAGE 1 Rabbit Monoclonal Antibody - Protein Information

**Name** MAGEA1

## Synonyms **MAGE1, MAGE1A**

### Function

May be involved in transcriptional regulation through interaction with SNW1 and recruiting histone deacetylase HDAC1. May inhibit notch intracellular domain (NICD) transactivation. May play a role in embryonal development and tumor transformation or aspects of tumor progression. Antigen recognized on a melanoma by autologous cytolytic T-lymphocytes.

### Cellular Location

Cytoplasm. Nucleus.

### Tissue Location

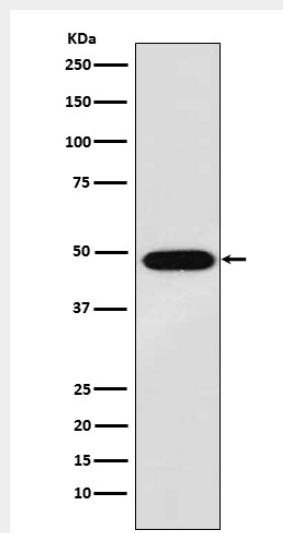
Expressed in many tumors of several types, such as melanoma, head and neck squamous cell carcinoma, lung carcinoma and breast carcinoma, but not in normal tissues except for testes. Never expressed in kidney tumors, leukemias and lymphomas

## Anti-MAGE 1 Rabbit Monoclonal Antibody - Protocols

Provided below are standard protocols that you may find useful for product applications.

- [Western Blot](#)
- [Blocking Peptides](#)
- [Dot Blot](#)
- [Immunohistochemistry](#)
- [Immunofluorescence](#)
- [Immunoprecipitation](#)
- [Flow Cytometry](#)
- [Cell Culture](#)

## Anti-MAGE 1 Rabbit Monoclonal Antibody - Images



Western blot analysis of MAGE 1 expression in A375 cell lysate.