

Anti-RAD23A Rabbit Monoclonal Antibody Catalog # ABO15804

Specification

Anti-RAD23A Rabbit Monoclonal Antibody - Product Information

Application	WB, FC
Primary Accession	P54725
Host	Rabbit
Isotype	IgG
Reactivity	Rat, Human, Mouse
Clonality	Monoclonal
Format	Liquid

Description

Anti-RAD23A Rabbit Monoclonal Antibody . Tested in WB, Flow Cytometry applications. This antibody reacts with Human, Mouse, Rat.

Anti-RAD23A Rabbit Monoclonal Antibody - Additional Information

Gene ID 5886

Other Names

UV excision repair protein RAD23 homolog A, HR23A, hHR23A, RAD23A

Calculated MW

60 kDa KDa

Application Details

WB 1:1000-1:5000
FC 1:50

Contents

Rabbit IgG in phosphate buffered saline, pH 7.4, 150mM NaCl, 0.02% sodium azide and 50% glycerol, 0.4-0.5mg/ml BSA.

Immunogen

A synthesized peptide derived from human RAD23A

Purification

Affinity-chromatography

Storage

Store at -20°C for one year. For short term storage and frequent use, store at 4°C for up to one month. Avoid repeated freeze-thaw cycles.

Anti-RAD23A Rabbit Monoclonal Antibody - Protein Information

Name RAD23A

Function

Multiubiquitin chain receptor involved in modulation of proteasomal degradation. Binds to 'Lys-48'-linked polyubiquitin chains in a length-dependent manner and with a lower affinity to 'Lys-63'- linked polyubiquitin chains. Proposed to be capable to bind simultaneously to the 26S proteasome and to polyubiquitinated substrates and to deliver ubiquitinated proteins to the proteasome. (Microbial infection) Involved in Vpr-dependent replication of HIV-1 in non-proliferating cells and primary macrophages. Required for the association of HIV-1 Vpr with the host proteasome.

Cellular Location

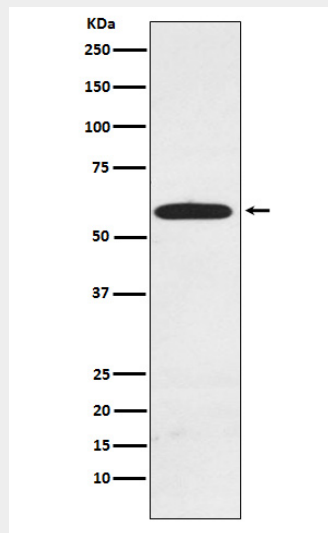
Nucleus.

Anti-RAD23A Rabbit Monoclonal Antibody - Protocols

Provided below are standard protocols that you may find useful for product applications.

- [Western Blot](#)
- [Blocking Peptides](#)
- [Dot Blot](#)
- [Immunohistochemistry](#)
- [Immunofluorescence](#)
- [Immunoprecipitation](#)
- [Flow Cytometry](#)
- [Cell Culture](#)

Anti-RAD23A Rabbit Monoclonal Antibody - Images



Western blot analysis of RAD23A expression in MCF7 cell lysate.