

Anti-DCR2 Rabbit Monoclonal Antibody
Catalog # ABO15799**Specification****Anti-DCR2 Rabbit Monoclonal Antibody - Product Information**

Application	WB, IHC, IF, ICC
Primary Accession	O9UBN6
Host	Rabbit
Isotype	IgG
Reactivity	Human
Clonality	Monoclonal
Format	Liquid

Description

Anti-DCR2 Rabbit Monoclonal Antibody . Tested in WB, IHC, ICC/IF applications. This antibody reacts with Human.

Anti-DCR2 Rabbit Monoclonal Antibody - Additional Information

Gene ID 8793

Other Names

Tumor necrosis factor receptor superfamily member 10D, Decoy receptor 2, DcR2, TNF-related apoptosis-inducing ligand receptor 4, TRAIL receptor 4, TRAIL-R4, TRAIL receptor with a truncated death domain, CD264, TNFRSF10D (http://www.genenames.org/cgi-bin/gene_symbol_report?hgnc_id=11907)
HGNC:11907

Calculated MW

36 kDa KDa

Application Details

WB 1:500-1:2000
IHC 1:50-1:200
ICC/IF 1:50-1:200

Contents

Rabbit IgG in phosphate buffered saline, pH 7.4, 150mM NaCl, 0.02% sodium azide and 50% glycerol, 0.4-0.5mg/ml BSA.

Immunogen

A synthesized peptide derived from human DCR2

Purification

Affinity-chromatography

Storage

Store at -20°C for one year. For short term storage and frequent use, store at 4°C for up to one month. Avoid repeated freeze-thaw cycles.

Anti-DCR2 Rabbit Monoclonal Antibody - Protein Information

Name TNFRSF10D ([HGNC:11907](#))

Function

Receptor for the cytotoxic ligand TRAIL (PubMed:[9430226](http://www.uniprot.org/citations/9430226)). Contains a truncated death domain and hence is not capable of inducing apoptosis but protects against TRAIL-mediated apoptosis (PubMed:[9537512](http://www.uniprot.org/citations/9537512)). Reports are contradictory with regards to its ability to induce the NF-kappa-B pathway. According to PubMed:[9382840](http://www.uniprot.org/citations/9382840), it cannot but according to PubMed:[9430226](http://www.uniprot.org/citations/9430226), it can induce the NF-kappa-B pathway (PubMed:[9382840](http://www.uniprot.org/citations/9382840), PubMed:[9430226](http://www.uniprot.org/citations/9430226)).

Cellular Location

Membrane; Single-pass type I membrane protein

Tissue Location

Widely expressed, in particular in fetal kidney, lung and liver, and in adult testis and liver. Also expressed in peripheral blood leukocytes, colon and small intestine, ovary, prostate, thymus, spleen, pancreas, kidney, lung, placenta and heart

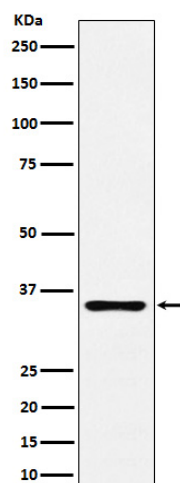
Anti-DCR2 Rabbit Monoclonal Antibody - Protocols

Provided below are standard protocols that you may find useful for product applications.

- [Western Blot](#)
- [Blocking Peptides](#)
- [Dot Blot](#)
- [Immunohistochemistry](#)
- [Immunofluorescence](#)
- [Immunoprecipitation](#)
- [Flow Cytometry](#)
- [Cell Culture](#)

Anti-DCR2 Rabbit Monoclonal Antibody - Images





Western blot analysis of DCR2 expression in Human prostate lysate.