

## Anti-CRKL Rabbit Monoclonal Antibody Catalog # ABO15793

### Specification

---

#### Anti-CRKL Rabbit Monoclonal Antibody - Product Information

Application	WB, IHC, IF, ICC
Primary Accession	<a href="#">P46109</a>
Host	Rabbit
Isotype	IgG
Reactivity	Human
Clonality	Monoclonal
Format	Liquid

#### Description

Anti-CRKL Rabbit Monoclonal Antibody . Tested in WB, IHC, ICC/IF applications. This antibody reacts with Human.

#### Anti-CRKL Rabbit Monoclonal Antibody - Additional Information

**Gene ID** 1399

#### Other Names

Crk-like protein, CRKL

#### Calculated MW

39 kDa KDa

#### Application Details

WB 1:500-1:1000<br>IHC 1:50-1:200<br>ICC/IF 1:50-1:200

#### Contents

Rabbit IgG in phosphate buffered saline, pH 7.4, 150mM NaCl, 0.02% sodium azide and 50% glycerol, 0.4-0.5mg/ml BSA.

#### Immunogen

A synthesized peptide derived from human CRKL

#### Purification

Affinity-chromatography

Storage

**Store at -20°C for one year. For short term storage and frequent use, store at 4°C for up to one month. Avoid repeated freeze-thaw cycles.**

#### Anti-CRKL Rabbit Monoclonal Antibody - Protein Information

**Name** CRKL

### Function

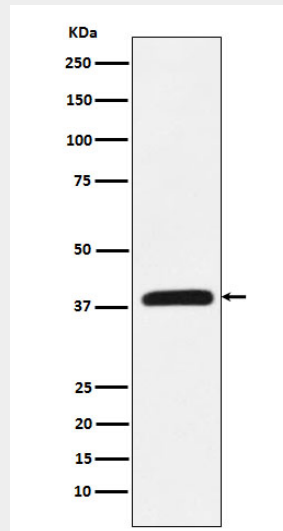
May mediate the transduction of intracellular signals.

### Anti-CRKL Rabbit Monoclonal Antibody - Protocols

Provided below are standard protocols that you may find useful for product applications.

- [Western Blot](#)
- [Blocking Peptides](#)
- [Dot Blot](#)
- [Immunohistochemistry](#)
- [Immunofluorescence](#)
- [Immunoprecipitation](#)
- [Flow Cytometry](#)
- [Cell Culture](#)

### Anti-CRKL Rabbit Monoclonal Antibody - Images



Western blot analysis of CRKL expression in K562 cell lysate.