

Anti-NCF1 Rabbit Monoclonal Antibody Catalog # ABO15791

Specification

Anti-NCF1 Rabbit Monoclonal Antibody - Product Information

Application	WB, IP
Primary Accession	P14598
Host	Rabbit
Isotype	IgG
Reactivity	Human
Clonality	Monoclonal
Format	Liquid

Description

Anti-NCF1 Rabbit Monoclonal Antibody . Tested in WB, IP applications. This antibody reacts with Human.

Anti-NCF1 Rabbit Monoclonal Antibody - Additional Information

Gene ID 653361

Other Names

Neutrophil cytosol factor 1, NCF-1, 47 kDa autosomal chronic granulomatous disease protein, 47 kDa neutrophil oxidase factor, NCF-47K, Neutrophil NADPH oxidase factor 1, Nox organizer 2, Nox-organizing protein 2, SH3 and PX domain-containing protein 1A, p47-phox, NCF1, NOXO2, SH3PXD1A

Calculated MW

47 kDa KDa

Application Details

WB 1:500-1:2000
IP 1:50

Contents

Rabbit IgG in phosphate buffered saline, pH 7.4, 150mM NaCl, 0.02% sodium azide and 50% glycerol, 0.4-0.5mg/ml BSA.

Immunogen

A synthesized peptide derived from human NCF1

Purification

Affinity-chromatography

Storage

Store at -20°C for one year. For short term storage and frequent use, store at 4°C for up to one month. Avoid repeated freeze-thaw cycles.

Anti-NCF1 Rabbit Monoclonal Antibody - Protein Information

Name NCF1

Synonyms NOXO2, SH3PXD1A

Function

NCF2, NCF1, and a membrane bound cytochrome b558 are required for activation of the latent NADPH oxidase (necessary for superoxide production).

Cellular Location

Cytoplasm, cytosol. Membrane; Peripheral membrane protein; Cytoplasmic side

Tissue Location

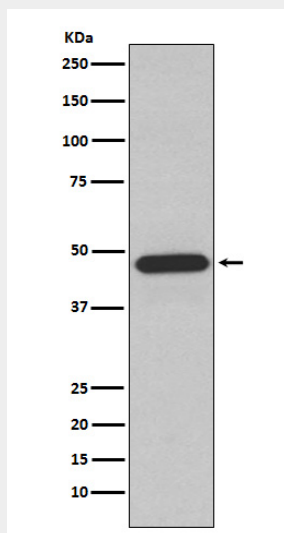
Detected in peripheral blood monocytes and neutrophils (at protein level).

Anti-NCF1 Rabbit Monoclonal Antibody - Protocols

Provided below are standard protocols that you may find useful for product applications.

- [Western Blot](#)
- [Blocking Peptides](#)
- [Dot Blot](#)
- [Immunohistochemistry](#)
- [Immunofluorescence](#)
- [Immunoprecipitation](#)
- [Flow Cytometry](#)
- [Cell Culture](#)

Anti-NCF1 Rabbit Monoclonal Antibody - Images



Western blot analysis of NCF1 expression in Raji cell lysate.