

## Anti-THRA Rabbit Monoclonal Antibody Catalog # ABO15790

### Specification

---

#### Anti-THRA Rabbit Monoclonal Antibody - Product Information

Application	WB
Primary Accession	<a href="#">P10827</a>
Host	Rabbit
Isotype	IgG
Reactivity	Human
Clonality	Monoclonal
Format	Liquid

#### Description

Anti-THRA Rabbit Monoclonal Antibody . Tested in WB application. This antibody reacts with Human.

#### Anti-THRA Rabbit Monoclonal Antibody - Additional Information

Gene ID 7067

#### Other Names

Thyroid hormone receptor alpha, Nuclear receptor subfamily 1 group A member 1, V-erbA-related protein 7, EAR-7, c-erbA-1, c-erbA-alpha, THRA, EAR7, ERBA1, NR1A1, THRA1, THRA2

#### Calculated MW

55 kDa KDa

#### Application Details

WB 1:500-1:2000

#### Contents

Rabbit IgG in phosphate buffered saline, pH 7.4, 150mM NaCl, 0.02% sodium azide and 50% glycerol, 0.4-0.5mg/ml BSA.

#### Immunogen

A synthesized peptide derived from human THRA

#### Purification

Affinity-chromatography

#### Storage

Store at -20°C for one year. For short term storage and frequent use, store at 4°C for up to one month. Avoid repeated freeze-thaw cycles.

#### Anti-THRA Rabbit Monoclonal Antibody - Protein Information

Name THRA

**Synonyms** EAR7, ERBA1, NR1A1, THRA1, THRA2

**Function**

[Isoform Alpha-1]: Nuclear hormone receptor that can act as a repressor or activator of transcription. High affinity receptor for thyroid hormones, including triiodothyronine and thyroxine.

**Cellular Location**

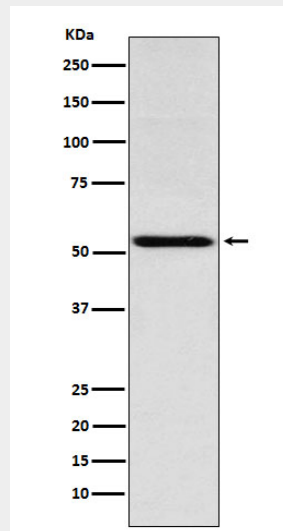
Nucleus.

**Anti-THRA Rabbit Monoclonal Antibody - Protocols**

Provided below are standard protocols that you may find useful for product applications.

- [Western Blot](#)
- [Blocking Peptides](#)
- [Dot Blot](#)
- [Immunohistochemistry](#)
- [Immunofluorescence](#)
- [Immunoprecipitation](#)
- [Flow Cytometry](#)
- [Cell Culture](#)

**Anti-THRA Rabbit Monoclonal Antibody - Images**



Western blot analysis of THRA expression in Jurkat cell lysate.