

Anti-CCL4/MIP1 beta Rabbit Monoclonal Antibody
Catalog # ABO15778

Specification

Anti-CCL4/MIP1 beta Rabbit Monoclonal Antibody - Product Information

Application	WB, IF, ICC, IP
Primary Accession	P13236
Host	Rabbit
Isotype	IgG
Reactivity	Human, Mouse
Clonality	Monoclonal
Format	Liquid

Description

Anti-CCL4/MIP1 beta Rabbit Monoclonal Antibody . Tested in WB, ICC/IF, IP applications. This antibody reacts with Human, Mouse.

Anti-CCL4/MIP1 beta Rabbit Monoclonal Antibody - Additional Information

Gene ID 388372;6351

Other Names

C-C motif chemokine 4, G-26 T-lymphocyte-secreted protein, HC21, Lymphocyte activation gene 1 protein, LAG-1, MIP-1-beta(1-69), Macrophage inflammatory protein 1-beta, MIP-1-beta, PAT 744, Protein H400, SIS-gamma, Small-inducible cytokine A4, T-cell activation protein 2, ACT-2, MIP-1-beta(3-69), CCL4, LAG1, MIP1B, SCYA4

Calculated MW

11 kDa KDa

Application Details

WB 1:1000-1:5000
ICC/IF 1:50-1:200
IP 1:50

Contents

Rabbit IgG in phosphate buffered saline, pH 7.4, 150mM NaCl, 0.02% sodium azide and 50% glycerol, 0.4-0.5mg/ml BSA.

Immunogen

A synthesized peptide derived from human CCL4/MIP1 beta

Purification

Affinity-chromatography

Storage

Store at -20°C for one year. For short term storage and frequent use, store at 4°C for up to one month. Avoid repeated freeze-thaw cycles.

Anti-CCL4/MIP1 beta Rabbit Monoclonal Antibody - Protein Information

Name CCL4

Synonyms LAG1, MIP1B, SCYA4

Function

Monokine with inflammatory and chemokinetic properties. Binds to CCR5. One of the major HIV-suppressive factors produced by CD8+ T- cells. Recombinant MIP-1-beta induces a dose-dependent inhibition of different strains of HIV-1, HIV-2, and simian immunodeficiency virus (SIV). The processed form MIP-1-beta(3-69) retains the abilities to induce down-modulation of surface expression of the chemokine receptor CCR5 and to inhibit the CCR5-mediated entry of HIV-1 in T-cells. MIP-1- beta(3-69) is also a ligand for CCR1 and CCR2 isoform B.

Cellular Location

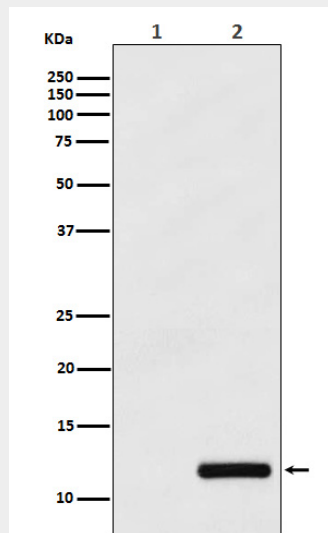
Secreted.

Anti-CCL4/MIP1 beta Rabbit Monoclonal Antibody - Protocols

Provided below are standard protocols that you may find useful for product applications.

- [Western Blot](#)
- [Blocking Peptides](#)
- [Dot Blot](#)
- [Immunohistochemistry](#)
- [Immunofluorescence](#)
- [Immunoprecipitation](#)
- [Flow Cytometry](#)
- [Cell Culture](#)

Anti-CCL4/MIP1 beta Rabbit Monoclonal Antibody - Images



Western blot analysis of CCL4/MIP1 beta expression in (1) THP-1 cell lysate; (2) THP-1 cell treated with PMA+LPS+Brefeldin A.