

Anti-Salivary alpha amylase Rabbit Monoclonal Antibody
Catalog # ABO15777**Specification**

Anti-Salivary alpha amylase Rabbit Monoclonal Antibody - Product Information

Application	WB
Primary Accession	P04745
Host	Rabbit
Isotype	IgG
Reactivity	Human
Clonality	Monoclonal
Format	Liquid

Description

Anti-Salivary alpha amylase Rabbit Monoclonal Antibody . Tested in WB application. This antibody reacts with Human.

Anti-Salivary alpha amylase Rabbit Monoclonal Antibody - Additional Information**Calculated MW**

58 kDa KDa

Application Details

WB 1:500-1:2000

Contents

Rabbit IgG in phosphate buffered saline, pH 7.4, 150mM NaCl, 0.02% sodium azide and 50% glycerol, 0.4-0.5mg/ml BSA.

Immunogen

A synthesized peptide derived from human Salivary alpha amylase

Purification

Affinity-chromatography

Storage

Store at -20°C for one year. For short term storage and frequent use, store at 4°C for up to one month. Avoid repeated freeze-thaw cycles.

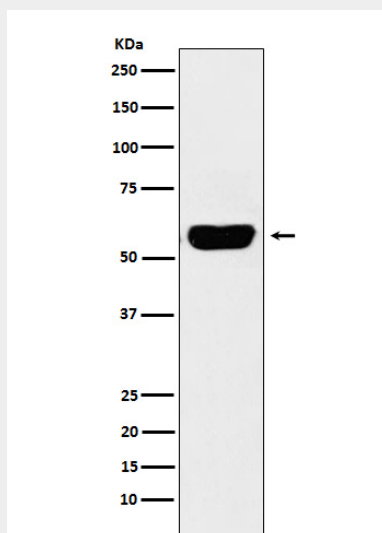
Anti-Salivary alpha amylase Rabbit Monoclonal Antibody - Protein Information**Anti-Salivary alpha amylase Rabbit Monoclonal Antibody - Protocols**

Provided below are standard protocols that you may find useful for product applications.

- [Western Blot](#)

- [Blocking Peptides](#)
- [Dot Blot](#)
- [Immunohistochemistry](#)
- [Immunofluorescence](#)
- [Immunoprecipitation](#)
- [Flow Cytometry](#)
- [Cell Culture](#)

Anti-Salivary alpha amylase Rabbit Monoclonal Antibody - Images



Western blot analysis of Salivary alpha amylase expression in Human pancreas lysate.