

## Anti-Poliovirus Receptor Rabbit Monoclonal Antibody Catalog # ABO15775

### Specification

---

#### Anti-Poliovirus Receptor Rabbit Monoclonal Antibody - Product Information

Application	WB, IP
Primary Accession	<a href="#">P15151</a>
Host	Rabbit
Isotype	IgG
Reactivity	Human
Clonality	Monoclonal
Format	Liquid

#### Description

Anti-Poliovirus Receptor Rabbit Monoclonal Antibody . Tested in WB, IP applications. This antibody reacts with Human.

#### Anti-Poliovirus Receptor Rabbit Monoclonal Antibody - Additional Information

**Gene ID** 5817

#### Other Names

Poliovirus receptor, Nectin-like protein 5, NECL-5, CD155, PVR, PVS

#### Calculated MW

70-80 kDa KDa

#### Application Details

WB 1:500-1:1000<br>IP 1:40

#### Contents

Rabbit IgG in phosphate buffered saline, pH 7.4, 150mM NaCl, 0.02% sodium azide and 50% glycerol, 0.4-0.5mg/ml BSA.

#### Immunogen

A synthesized peptide derived from human Poliovirus Receptor

#### Purification

Affinity-chromatography

Storage

**Store at -20°C for one year. For short term storage and frequent use, store at 4°C for up to one month. Avoid repeated freeze-thaw cycles.**

#### Anti-Poliovirus Receptor Rabbit Monoclonal Antibody - Protein Information

**Name** PVR

## Synonyms PVS

### Function

Mediates NK cell adhesion and triggers NK cell effector functions. Binds two different NK cell receptors: CD96 and CD226. These interactions accumulate at the cell-cell contact site, leading to the formation of a mature immunological synapse between NK cell and target cell. This may trigger adhesion and secretion of lytic granules and IFN-gamma and activate cytotoxicity of activated NK cells. May also promote NK cell-target cell modular exchange, and PVR transfer to the NK cell. This transfer is more important in some tumor cells expressing a lot of PVR, and may trigger fratricide NK cell activation, providing tumors with a mechanism of immunoevasion. Plays a role in mediating tumor cell invasion and migration.

### Cellular Location

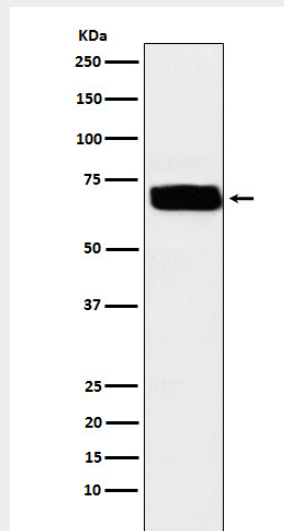
[Isoform Alpha]: Cell membrane; Single-pass type I membrane protein [Isoform Beta]: Secreted.

## Anti-Poliovirus Receptor Rabbit Monoclonal Antibody - Protocols

Provided below are standard protocols that you may find useful for product applications.

- [Western Blot](#)
- [Blocking Peptides](#)
- [Dot Blot](#)
- [Immunohistochemistry](#)
- [Immunofluorescence](#)
- [Immunoprecipitation](#)
- [Flow Cytometry](#)
- [Cell Culture](#)

## Anti-Poliovirus Receptor Rabbit Monoclonal Antibody - Images



Western blot analysis of Poliovirus Receptor expression in U87-MG cell lysate.