

## Anti-KDM4B / JMJD2B Rabbit Monoclonal Antibody Catalog # ABO15767

### Specification

---

#### Anti-KDM4B / JMJD2B Rabbit Monoclonal Antibody - Product Information

Application	WB, IHC, IF, ICC, FC
Primary Accession	<a href="#">O94953</a>
Host	Rabbit
Isotype	IgG
Reactivity	Rat, Human, Mouse
Clonality	Monoclonal
Format	Liquid

#### Description

Anti-KDM4B / JMJD2B Rabbit Monoclonal Antibody . Tested in WB, IHC, ICC/IF, Flow Cytometry applications. This antibody reacts with Human, Mouse, Rat.

#### Anti-KDM4B / JMJD2B Rabbit Monoclonal Antibody - Additional Information

Gene ID 23030

#### Other Names

Lysine-specific demethylase 4B, 1.14.11.66, JmjC domain-containing histone demethylation protein 3B, Jumonji domain-containing protein 2B, [histone H3]-trimethyl-L-lysine(9) demethylase 4B, KDM4B, JHDM3B, JMJD2B, KIAA0876

#### Application Details

WB 1:500-1:2000<br>IHC 1:50-1:200<br>ICC/IF 1:50-1:200<br>FC 1:200

#### Contents

Rabbit IgG in phosphate buffered saline, pH 7.4, 150mM NaCl, 0.02% sodium azide and 50% glycerol, 0.4-0.5mg/ml BSA.

#### Immunogen

A synthesized peptide derived from human KDM4B / JMJD2B

#### Purification

Affinity-chromatography

#### Storage

Store at -20°C for one year. For short term storage and frequent use, store at 4°C for up to one month. Avoid repeated freeze-thaw cycles.

#### Anti-KDM4B / JMJD2B Rabbit Monoclonal Antibody - Protein Information

Name KDM4B

Synonyms JHDM3B, JMJD2B, KIAA0876

### Function

Histone demethylase that specifically demethylates 'Lys-9' of histone H3, thereby playing a role in histone code. Does not demethylate histone H3 'Lys-4', H3 'Lys-27', H3 'Lys-36' nor H4 'Lys- 20'. Only able to demethylate trimethylated H3 'Lys-9', with a weaker activity than KDM4A, KDM4C and KDM4D. Demethylation of Lys residue generates formaldehyde and succinate (PubMed:<a href="http://www.uniprot.org/citations/16603238" target="\_blank">16603238</a>, PubMed:<a href="http://www.uniprot.org/citations/28262558" target="\_blank">28262558</a>). Plays a critical role in the development of the central nervous system (CNS).

### Cellular Location

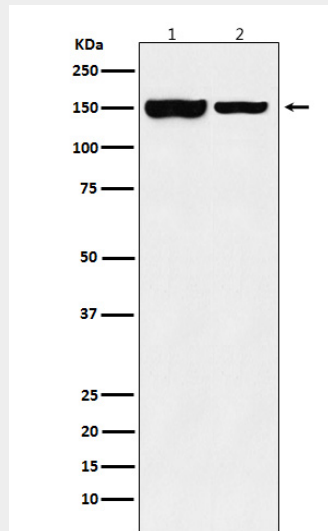
Nucleus {ECO:0000255|PROSITE-ProRule:PRU00537, ECO:0000269|PubMed:15927959}

### Anti-KDM4B / JMJD2B Rabbit Monoclonal Antibody - Protocols

Provided below are standard protocols that you may find useful for product applications.

- [Western Blot](#)
- [Blocking Peptides](#)
- [Dot Blot](#)
- [Immunohistochemistry](#)
- [Immunofluorescence](#)
- [Immunoprecipitation](#)
- [Flow Cytometry](#)
- [Cell Culture](#)

### Anti-KDM4B / JMJD2B Rabbit Monoclonal Antibody - Images



Western blot analysis of KDM4B / JMJD2B expression in (1) SW480 cell lysate; (2) Mouse testis cell lysate.