

Anti-ROR2 Rabbit Monoclonal Antibody Catalog # ABO15755

Specification

Anti-ROR2 Rabbit Monoclonal Antibody - Product Information

Application	WB, IF, ICC, FC
Primary Accession	Q01974
Host	Rabbit
Isotype	IgG
Reactivity	Human
Clonality	Monoclonal
Format	Liquid

Description

Anti-ROR2 Rabbit Monoclonal Antibody . Tested in WB, ICC/IF, Flow Cytometry applications. This antibody reacts with Human.

Anti-ROR2 Rabbit Monoclonal Antibody - Additional Information

Gene ID 4920

Other Names

Tyrosine-protein kinase transmembrane receptor ROR2, 2.7.10.1, Neurotrophic tyrosine kinase, receptor-related 2, ROR2, NTRKR2

Calculated MW

105 kDa KDa

Application Details

WB 1:500-1:2000
ICC/IF 1:50-1:200
FC 1:50

Contents

Rabbit IgG in phosphate buffered saline, pH 7.4, 150mM NaCl, 0.02% sodium azide and 50% glycerol, 0.4-0.5mg/ml BSA.

Immunogen

A synthesized peptide derived from human ROR2

Purification

Affinity-chromatography

Storage

Store at -20°C for one year. For short term storage and frequent use, store at 4°C for up to one month. Avoid repeated freeze-thaw cycles.

Anti-ROR2 Rabbit Monoclonal Antibody - Protein Information

Name ROR2

Synonyms NTRKR2

Function

Tyrosine-protein kinase receptor which may be involved in the early formation of the chondrocytes. It seems to be required for cartilage and growth plate development (By similarity). Phosphorylates YWHAB, leading to induction of osteogenesis and bone formation (PubMed:17717073). In contrast, has also been shown to have very little tyrosine kinase activity in vitro. May act as a receptor for wnt ligand WNT5A which may result in the inhibition of WNT3A-mediated signaling (PubMed:25029443).

Cellular Location

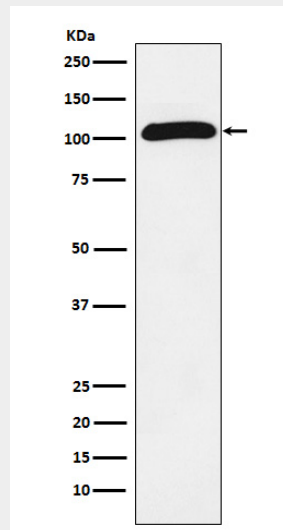
Cell membrane; Single-pass type I membrane protein

Anti-ROR2 Rabbit Monoclonal Antibody - Protocols

Provided below are standard protocols that you may find useful for product applications.

- [Western Blot](#)
- [Blocking Peptides](#)
- [Dot Blot](#)
- [Immunohistochemistry](#)
- [Immunofluorescence](#)
- [Immunoprecipitation](#)
- [Flow Cytometry](#)
- [Cell Culture](#)

Anti-ROR2 Rabbit Monoclonal Antibody - Images



Western blot analysis of ROR2 expression in Saos-2 cell lysate.