

**Anti-Galactosidase alpha Rabbit Monoclonal Antibody**  
Catalog # ABO15753**Specification****Anti-Galactosidase alpha Rabbit Monoclonal Antibody - Product Information**

Application	WB, IHC, IF, ICC, IP, FC
Primary Accession	<a href="#">P06280</a>
Host	Rabbit
Isotype	IgG
Reactivity	Human
Clonality	Monoclonal
Format	Liquid

**Description**

Anti-Galactosidase alpha Rabbit Monoclonal Antibody . Tested in WB, IHC, ICC/IF, IP, Flow Cytometry applications. This antibody reacts with Human.

**Anti-Galactosidase alpha Rabbit Monoclonal Antibody - Additional Information**

**Gene ID** 2717

**Other Names**

Alpha-galactosidase A, 3.2.1.22, Alpha-D-galactosidase A, Alpha-D-galactoside galactohydrolase, Galactosylgalactosylglucosylceramidase GLA, Melibiase, Agalsidase, GLA ([HGNC:4296](http://www.genenames.org/cgi-bin/gene_symbol_report?hgnc_id=4296))

**Calculated MW**

46 kDa KDa

**Application Details**

WB 1:500-1:2000<br>IHC 1:50-1:200<br>ICC/IF 1:50-1:200<br>IP 1:50<br>FC 1:80

**Contents**

Rabbit IgG in phosphate buffered saline, pH 7.4, 150mM NaCl, 0.02% sodium azide and 50% glycerol, 0.4-0.5mg/ml BSA.

**Immunogen**

A synthesized peptide derived from human Galactosidase alpha

**Purification**

Affinity-chromatography

Storage

**Store at -20°C for one year. For short term storage and frequent use, store at 4°C for up to one month. Avoid repeated freeze-thaw cycles.**

**Anti-Galactosidase alpha Rabbit Monoclonal Antibody - Protein Information**

**Name** GLA ([HGNC:4296](#))

**Function**

Catalyzes the hydrolysis of glycosphingolipids and participates in their degradation in the lysosome.

**Cellular Location**

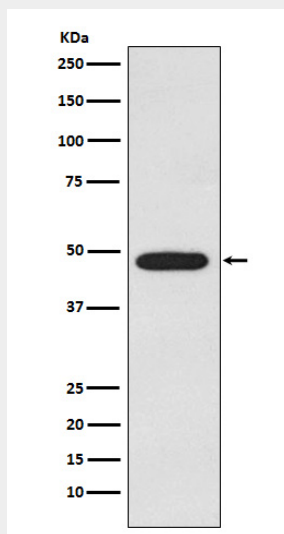
Lysosome.

**Anti-Galactosidase alpha Rabbit Monoclonal Antibody - Protocols**

Provided below are standard protocols that you may find useful for product applications.

- [Western Blot](#)
- [Blocking Peptides](#)
- [Dot Blot](#)
- [Immunohistochemistry](#)
- [Immunofluorescence](#)
- [Immunoprecipitation](#)
- [Flow Cytometry](#)
- [Cell Culture](#)

**Anti-Galactosidase alpha Rabbit Monoclonal Antibody - Images**



Western blot analysis of Galactosidase alpha expression in MCF-7 cell lysate.