

**Anti-EBP1 / PA2G4 Rabbit Monoclonal Antibody**  
**Catalog # ABO15750****Specification**

---

**Anti-EBP1 / PA2G4 Rabbit Monoclonal Antibody - Product Information**

Application	WB, IHC, IF, ICC, IP, FC
Primary Accession	<a href="#">Q9UQ80</a>
Host	Rabbit
Isotype	IgG
Reactivity	Rat, Human, Mouse
Clonality	Monoclonal
Format	Liquid

**Description**

Anti-EBP1 / PA2G4 Rabbit Monoclonal Antibody . Tested in WB, IHC, ICC/IF, IP, Flow Cytometry applications. This antibody reacts with Human, Mouse, Rat.

**Anti-EBP1 / PA2G4 Rabbit Monoclonal Antibody - Additional Information**

**Gene ID** 5036

**Other Names**

Proliferation-associated protein 2G4, Cell cycle protein p38-2G4 homolog, hG4-1, ErbB3-binding protein 1, PA2G4, EBP1

**Calculated MW**

48 kDa KDa

**Application Details**

WB 1:1000-1:5000<br>IHC 1:50-1:200<br>ICC/IF 1:50-1:200<br>IP 1:40<br>FC 1:30

**Contents**

Rabbit IgG in phosphate buffered saline, pH 7.4, 150mM NaCl, 0.02% sodium azide and 50% glycerol, 0.4-0.5mg/ml BSA.

**Immunogen**

A synthesized peptide derived from human EBP1 / PA2G4

**Purification**

Affinity-chromatography

**Storage**

**Store at -20°C for one year. For short term storage and frequent use, store at 4°C for up to one month. Avoid repeated freeze-thaw cycles.**

**Anti-EBP1 / PA2G4 Rabbit Monoclonal Antibody - Protein Information**

**Name** PA2G4

## Synonyms EBP1

### Function

May play a role in a ERBB3-regulated signal transduction pathway. Seems be involved in growth regulation. Acts a corepressor of the androgen receptor (AR) and is regulated by the ERBB3 ligand neuregulin-1/hereregulin (HRG). Inhibits transcription of some E2F1- regulated promoters, probably by recruiting histone acetylase (HAT) activity. Binds RNA. Associates with 28S, 18S and 5.8S mature rRNAs, several rRNA precursors and probably U3 small nucleolar RNA. May be involved in regulation of intermediate and late steps of rRNA processing. May be involved in ribosome assembly. Mediates cap- independent translation of specific viral IRESs (internal ribosomal entry site) (By similarity). Regulates cell proliferation, differentiation, and survival. Isoform 1 suppresses apoptosis whereas isoform 2 promotes cell differentiation (By similarity).

### Cellular Location

[Isoform 1]: Cytoplasm. Nucleus, nucleolus Note=Translocates to the nucleus upon treatment with HRG Phosphorylation at Ser-361 by PKC/PRKCD regulates its nucleolar localization.

### Tissue Location

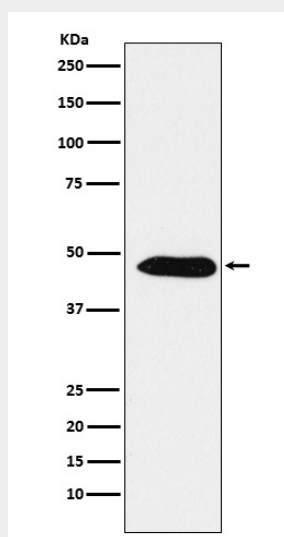
Isoform 2 is undetectable whereas isoform 1 is strongly expressed in cancer cells (at protein level). Isoform 1 and isoform 2 are widely expressed, including heart, brain, lung, pancreas, skeletal muscle, kidney, placenta and liver

## Anti-EBP1 / PA2G4 Rabbit Monoclonal Antibody - Protocols

Provided below are standard protocols that you may find useful for product applications.

- [Western Blot](#)
- [Blocking Peptides](#)
- [Dot Blot](#)
- [Immunohistochemistry](#)
- [Immunofluorescence](#)
- [Immunoprecipitation](#)
- [Flow Cytometry](#)
- [Cell Culture](#)

## Anti-EBP1 / PA2G4 Rabbit Monoclonal Antibody - Images



Western blot analysis of EBP1 / PA2G4 expression in A431 cell lysate.