

**Anti-MDH1 Rabbit Monoclonal Antibody**  
Catalog # ABO15748**Specification****Anti-MDH1 Rabbit Monoclonal Antibody - Product Information**

Application	WB, IF, ICC, IP, FC
Primary Accession	<a href="#">P40925</a>
Host	Rabbit
Isotype	IgG
Reactivity	Rat, Human, Mouse
Clonality	Monoclonal
Format	Liquid

**Description**

Anti-MDH1 Rabbit Monoclonal Antibody . Tested in WB, ICC/IF, IP, Flow Cytometry applications. This antibody reacts with Human, Mouse, Rat.

**Anti-MDH1 Rabbit Monoclonal Antibody - Additional Information**

**Gene ID** 4190

**Other Names**

Malate dehydrogenase, cytoplasmic, 1.1.1.37, Aromatic alpha-keto acid reductase, KAR, 1.1.1.96, Cytosolic malate dehydrogenase, MDH1 {ECO:0000303|PubMed:34012073, ECO:0000312|HGNC:HGNC:6970}

**Calculated MW**

36 kDa KDa

**Application Details**

WB 1:1000-1:5000<br>ICC/IF 1:50-1:200<br>IP 1:50<br>FC 1:30

**Contents**

Rabbit IgG in phosphate buffered saline, pH 7.4, 150mM NaCl, 0.02% sodium azide and 50% glycerol, 0.4-0.5mg/ml BSA.

**Immunogen**

A synthesized peptide derived from human MDH1

**Purification**

Affinity-chromatography

**Storage**

**Store at -20°C for one year. For short term storage and frequent use, store at 4°C for up to one month. Avoid repeated freeze-thaw cycles.**

**Anti-MDH1 Rabbit Monoclonal Antibody - Protein Information**

**Name** MDH1 {ECO:0000303|PubMed:34012073, ECO:0000312|HGNC:HGNC:6970}

### Function

Catalyzes the reduction of aromatic alpha-keto acids in the presence of NADH (PubMed:<a href="http://www.uniprot.org/citations/2449162" target="\_blank">2449162</a>, PubMed:<a href="http://www.uniprot.org/citations/3052244" target="\_blank">3052244</a>). Plays essential roles in the malate-aspartate shuttle and the tricarboxylic acid cycle, important in mitochondrial NADH supply for oxidative phosphorylation (PubMed:<a href="http://www.uniprot.org/citations/31538237" target="\_blank">31538237</a>). Catalyzes the reduction of 2-oxoglutarate to 2- hydroxyglutarate, leading to elevated reactive oxygen species (ROS) (PubMed:<a href="http://www.uniprot.org/citations/34012073" target="\_blank">34012073</a>).

### Cellular Location

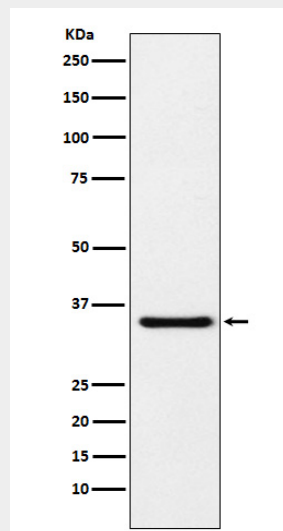
Cytoplasm, cytosol.

### Anti-MDH1 Rabbit Monoclonal Antibody - Protocols

Provided below are standard protocols that you may find useful for product applications.

- [Western Blot](#)
- [Blocking Peptides](#)
- [Dot Blot](#)
- [Immunohistochemistry](#)
- [Immunofluorescence](#)
- [Immunoprecipitation](#)
- [Flow Cytometry](#)
- [Cell Culture](#)

### Anti-MDH1 Rabbit Monoclonal Antibody - Images



Western blot analysis of MDH1 expression in HeLa cell lysate.