

Anti-TXNRD2 Rabbit Monoclonal Antibody
Catalog # ABO15747**Specification**

Anti-TXNRD2 Rabbit Monoclonal Antibody - Product Information

Application	WB, IHC
Primary Accession	Q9NNW7
Host	Rabbit
Isotype	IgG
Reactivity	Rat, Human, Mouse
Clonality	Monoclonal
Format	Liquid

Description

Anti-TXNRD2 Rabbit Monoclonal Antibody . Tested in WB, IHC applications. This antibody reacts with Human, Mouse, Rat.

Anti-TXNRD2 Rabbit Monoclonal Antibody - Additional Information

Gene ID 10587

Other Names

Thioredoxin reductase 2, mitochondrial, 1.8.1.9, Selenoprotein Z, SelZ, TR-beta, Thioredoxin reductase TR3, TXNRD2 (http://www.genenames.org/cgi-bin/gene_symbol_report?hgnc_id=18155 target="_blank">HGNC:18155), KIAA1652, TRXR2

Calculated MW

56 kDa KDa

Application Details

WB 1:500-1:2000
IHC 1:50-1:200

Contents

Rabbit IgG in phosphate buffered saline, pH 7.4, 150mM NaCl, 0.02% sodium azide and 50% glycerol, 0.4-0.5mg/ml BSA.

Immunogen

A synthesized peptide derived from human TXNRD2

Purification

Affinity-chromatography

Storage

Store at -20°C for one year. For short term storage and frequent use, store at 4°C for up to one month. Avoid repeated freeze-thaw cycles.

Anti-TXNRD2 Rabbit Monoclonal Antibody - Protein Information

Name TXNRD2 ([HGNC:18155](#))

Synonyms KIAA1652, TRXR2

Function

Involved in the control of reactive oxygen species levels and the regulation of mitochondrial redox homeostasis (PubMed:24601690). Maintains thioredoxin in a reduced state. May play a role in redox- regulated cell signaling.

Cellular Location

Mitochondrion.

Tissue Location

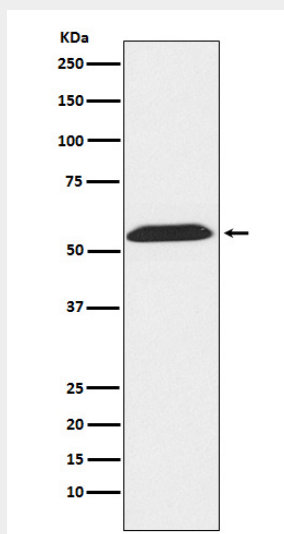
Highly expressed in the prostate, ovary, liver, testis, uterus, colon and small intestine. Intermediate levels in brain, skeletal muscle, heart and spleen. Low levels in placenta, pancreas, thymus and peripheral blood leukocytes. According to PubMed:10608886, high levels in kidney, whereas according to PubMed:9923614, levels are low. High expression is observed in the adrenal cortex (PubMed:24601690).

Anti-TXNRD2 Rabbit Monoclonal Antibody - Protocols

Provided below are standard protocols that you may find useful for product applications.

- [Western Blot](#)
- [Blocking Peptides](#)
- [Dot Blot](#)
- [Immunohistochemistry](#)
- [Immunofluorescence](#)
- [Immunoprecipitation](#)
- [Flow Cytometry](#)
- [Cell Culture](#)

Anti-TXNRD2 Rabbit Monoclonal Antibody - Images



Western blot analysis of TXNRD2 expression in LnCap cell lysate.