

Anti-CRMP5 Rabbit Monoclonal Antibody Catalog # ABO15744

Specification

Anti-CRMP5 Rabbit Monoclonal Antibody - Product Information

Application	WB, IHC, IP
Primary Accession	Q9BPU6
Host	Rabbit
Isotype	IgG
Reactivity	Rat, Human, Mouse
Clonality	Monoclonal
Format	Liquid

Description

Anti-CRMP5 Rabbit Monoclonal Antibody . Tested in WB, IHC, IP applications. This antibody reacts with Human, Mouse, Rat.

Anti-CRMP5 Rabbit Monoclonal Antibody - Additional Information

Gene ID 56896

Other Names

Dihydropyrimidinase-related protein 5, DRP-5, CRMP3-associated molecule, CRAM, Collapsin response mediator protein 5, CRMP-5, UNC33-like phosphoprotein 6, ULIP-6, DPYSL5, CRMP5, ULIP6

Calculated MW

61 kDa KDa

Application Details

WB 1:1000-1:5000
IHC 1:50-1:200
IP 1:50

Contents

Rabbit IgG in phosphate buffered saline, pH 7.4, 150mM NaCl, 0.02% sodium azide and 50% glycerol, 0.4-0.5mg/ml BSA.

Immunogen

A synthesized peptide derived from human CRMP5

Purification

Affinity-chromatography

Storage

Store at -20°C for one year. For short term storage and frequent use, store at 4°C for up to one month. Avoid repeated freeze-thaw cycles.

Anti-CRMP5 Rabbit Monoclonal Antibody - Protein Information

Name DPYSL5

Synonyms CRMP5, ULIP6

Function

Involved in the negative regulation of dendrite outgrowth.

Cellular Location

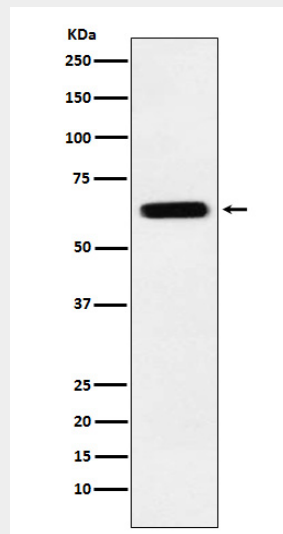
Cytoplasm.

Anti-CRMP5 Rabbit Monoclonal Antibody - Protocols

Provided below are standard protocols that you may find useful for product applications.

- [Western Blot](#)
- [Blocking Peptides](#)
- [Dot Blot](#)
- [Immunohistochemistry](#)
- [Immunofluorescence](#)
- [Immunoprecipitation](#)
- [Flow Cytometry](#)
- [Cell Culture](#)

Anti-CRMP5 Rabbit Monoclonal Antibody - Images



Western blot analysis of CRMP5 expression in SH-SY5Y cell lysate.