

Anti-AMHR2 Rabbit Monoclonal Antibody Catalog # ABO15742

Specification

Anti-AMHR2 Rabbit Monoclonal Antibody - Product Information

Application	WB
Primary Accession	Q16671
Host	Rabbit
Isotype	IgG
Reactivity	Human, Mouse
Clonality	Monoclonal
Format	Liquid

Description

Anti-AMHR2 Rabbit Monoclonal Antibody . Tested in WB application. This antibody reacts with Human, Mouse.

Anti-AMHR2 Rabbit Monoclonal Antibody - Additional Information

Gene ID 269

Other Names

Anti-Muellerian hormone type-2 receptor, 2.7.11.30, Anti-Muellerian hormone type II receptor, AMH type II receptor, MIS type II receptor, MISRII, MRII, AMHR2, AMHR, MISR2

Calculated MW

55 kDa KDa

Application Details

WB 1:500-1:2000

Contents

Rabbit IgG in phosphate buffered saline, pH 7.4, 150mM NaCl, 0.02% sodium azide and 50% glycerol, 0.4-0.5mg/ml BSA.

Immunogen

A synthesized peptide derived from human AMHR2

Purification

Affinity-chromatography

Storage

Store at -20°C for one year. For short term storage and frequent use, store at 4°C for up to one month. Avoid repeated freeze-thaw cycles.

Anti-AMHR2 Rabbit Monoclonal Antibody - Protein Information

Name AMHR2

Synonyms AMHR, MISR2

Function

On ligand binding, forms a receptor complex consisting of two type II and two type I transmembrane serine/threonine kinases. Type II receptors phosphorylate and activate type I receptors which autophosphorylate, then bind and activate SMAD transcriptional regulators. Receptor for anti-Muellerian hormone.

Cellular Location

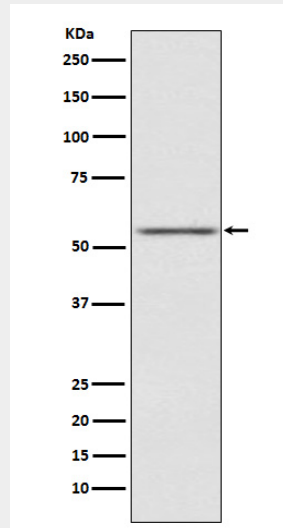
Membrane; Single-pass type I membrane protein.

Anti-AMHR2 Rabbit Monoclonal Antibody - Protocols

Provided below are standard protocols that you may find useful for product applications.

- [Western Blot](#)
- [Blocking Peptides](#)
- [Dot Blot](#)
- [Immunohistochemistry](#)
- [Immunofluorescence](#)
- [Immunoprecipitation](#)
- [Flow Cytometry](#)
- [Cell Culture](#)

Anti-AMHR2 Rabbit Monoclonal Antibody - Images



Western blot analysis of AMHR2 expression in SK-OV-3 cell lysate.