

Anti-DLAT Rabbit Monoclonal Antibody Catalog # ABO15733

Specification

Anti-DLAT Rabbit Monoclonal Antibody - Product Information

Application	WB, IF, ICC, IP, FC
Primary Accession	P10515
Host	Rabbit
Isotype	IgG
Reactivity	Rat, Human, Mouse
Clonality	Monoclonal
Format	Liquid

Description

Anti-DLAT Rabbit Monoclonal Antibody . Tested in WB, ICC/IF, IP, Flow Cytometry applications. This antibody reacts with Human, Mouse, Rat.

Anti-DLAT Rabbit Monoclonal Antibody - Additional Information

Gene ID 1737

Other Names

Dihydrolipoyllysine-residue acetyltransferase component of pyruvate dehydrogenase complex, mitochondrial, 2.3.1.12, 70 kDa mitochondrial autoantigen of primary biliary cirrhosis, PBC, Dihydrolipoamide acetyltransferase component of pyruvate dehydrogenase complex, M2 antigen complex 70 kDa subunit, Pyruvate dehydrogenase complex component E2, PDC-E2, PDCE2, DLAT (http://www.genenames.org/cgi-bin/gene_symbol_report?hgnc_id=2896 target="_blank">HGNC:2896), DLTA

Calculated MW

69 kDa KDa

Application Details

WB 1:500-1:2000
ICC/IF 1:50-1:200
IP 1:50
FC 1:50

Contents

Rabbit IgG in phosphate buffered saline, pH 7.4, 150mM NaCl, 0.02% sodium azide and 50% glycerol, 0.4-0.5mg/ml BSA.

Immunogen

A synthesized peptide derived from human DLAT

Purification

Affinity-chromatography

Storage

Store at -20°C for one year. For short term storage and frequent use, store at 4°C for up to one month. Avoid repeated freeze-thaw cycles.

Anti-DLAT Rabbit Monoclonal Antibody - Protein Information

Name DLAT ([HGNC:2896](#))

Synonyms DLTA

Function

As part of the pyruvate dehydrogenase complex, catalyzes the transfers of an acetyl group to a lipoic acid moiety (Probable). The pyruvate dehydrogenase complex, catalyzes the overall conversion of pyruvate to acetyl-CoA and CO(2), and thereby links cytoplasmic glycolysis and the mitochondrial tricarboxylic acid (TCA) cycle (Probable).

Cellular Location

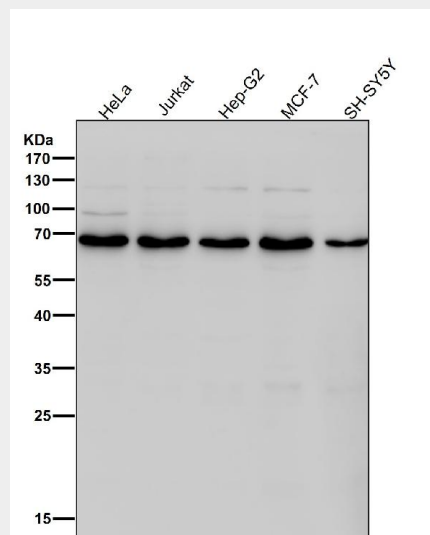
Mitochondrion matrix {ECO:0000250|UniProtKB:P08461}

Anti-DLAT Rabbit Monoclonal Antibody - Protocols

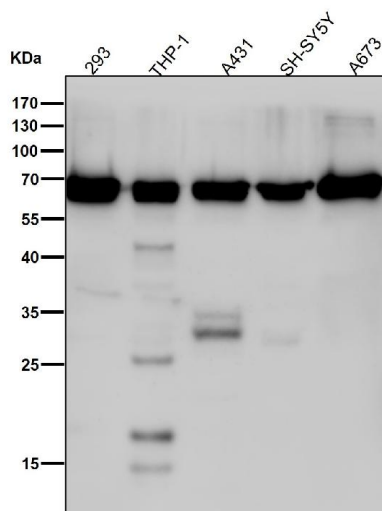
Provided below are standard protocols that you may find useful for product applications.

- [Western Blot](#)
- [Blocking Peptides](#)
- [Dot Blot](#)
- [Immunohistochemistry](#)
- [Immunofluorescence](#)
- [Immunoprecipitation](#)
- [Flow Cytometry](#)
- [Cell Culture](#)

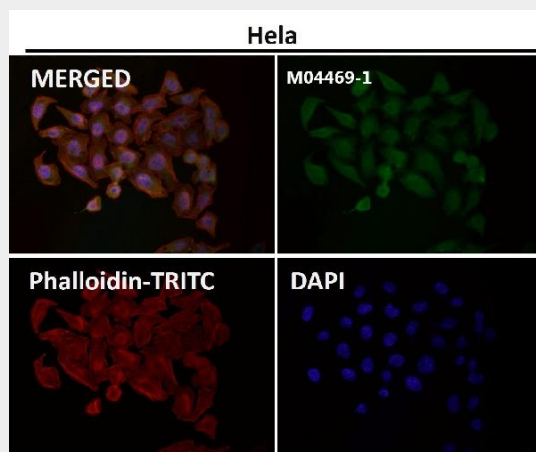
Anti-DLAT Rabbit Monoclonal Antibody - Images



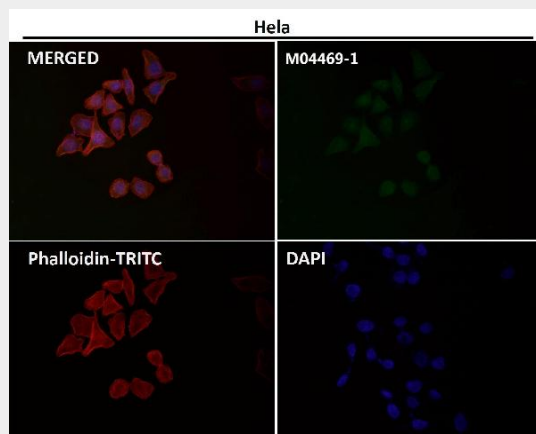
All lanes use the Antibody at 1:1W dilution for 1 hour at room temperature.



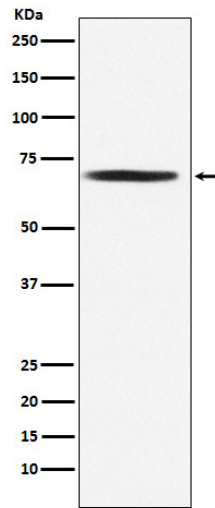
All lanes use the Antibody at 1:1W dilution for 1 hour at room temperature.



Immunofluorescent analysis using the Antibody at 1:50 dilution.



Immunofluorescent analysis using the Antibody at 1:150 dilution.



Western blot analysis of DLAT expression in Jurkat cell lysate.