

Anti-UAP56 Rabbit Monoclonal Antibody
Catalog # ABO15730**Specification****Anti-UAP56 Rabbit Monoclonal Antibody - Product Information**

Application	WB, IHC, IF, ICC, FC
Primary Accession	Q13838
Host	Rabbit
Isotype	IgG
Reactivity	Rat, Human, Mouse
Clonality	Monoclonal
Format	Liquid

Description

Anti-UAP56 Rabbit Monoclonal Antibody . Tested in WB, IHC, ICC/IF, Flow Cytometry applications. This antibody reacts with Human, Mouse, Rat.

Anti-UAP56 Rabbit Monoclonal Antibody - Additional Information

Gene ID 7919

Other Names

Spliceosome RNA helicase DDX39B, 3.6.4.13, 56 kDa U2AF65-associated protein, ATP-dependent RNA helicase p47, DEAD box protein UAP56, HLA-B-associated transcript 1 protein, DDX39B (http://www.genenames.org/cgi-bin/gene_symbol_report?hgnc_id=13917) HGNC:13917, BAT1, UAP56

Calculated MW

45 kDa KDa

Application Details

WB 1:1000-1:5000
IHC 1:50-1:200
ICC/IF 1:50-1:200
FC 1:20

Contents

Rabbit IgG in phosphate buffered saline, pH 7.4, 150mM NaCl, 0.02% sodium azide and 50% glycerol, 0.4-0.5mg/ml BSA.

Immunogen

A synthesized peptide derived from human UAP56

Purification

Affinity-chromatography

Storage

Store at -20°C for one year. For short term storage and frequent use, store at 4°C for up to one month. Avoid repeated freeze-thaw cycles.

Anti-UAP56 Rabbit Monoclonal Antibody - Protein Information

Name DDX39B ([HGNC:13917](#))

Synonyms BAT1, UAP56

Function

Involved in nuclear export of spliced and unspliced mRNA (PubMed:[15833825](http://www.uniprot.org/citations/15833825), PubMed:[15998806](http://www.uniprot.org/citations/15998806), PubMed:[17190602](http://www.uniprot.org/citations/17190602)). Component of the TREX complex which is thought to couple mRNA transcription, processing and nuclear export, and specifically associates with spliced mRNA and not with unspliced pre-mRNA (PubMed:[15833825](http://www.uniprot.org/citations/15833825), PubMed:[15998806](http://www.uniprot.org/citations/15998806), PubMed:[17190602](http://www.uniprot.org/citations/17190602)). The TREX complex is recruited to spliced mRNAs by a transcription-independent mechanism, binds to mRNA upstream of the exon-junction complex (EJC) and is recruited in a splicing- and cap-dependent manner to a region near the 5' end of the mRNA where it functions in mRNA export to the cytoplasm via the TAP/NXF1 pathway (PubMed:[15833825](http://www.uniprot.org/citations/15833825), PubMed:[15998806](http://www.uniprot.org/citations/15998806), PubMed:[17190602](http://www.uniprot.org/citations/17190602)). The THOC1-THOC2- THOC3 core complex alone is sufficient to promote ATPase activity of DDX39B; in the complex THOC2 is the only component that directly interacts with DDX39B (PubMed:[33191911](http://www.uniprot.org/citations/33191911)). Associates with SARNP/CIP29, which facilitates RNA binding of DDX39B and likely plays a role in mRNA export (PubMed:[37578863](http://www.uniprot.org/citations/37578863)). May undergo several rounds of ATP hydrolysis during assembly of TREX to drive subsequent loading of components such as ALYREF/THOC4 and CHTOP onto mRNA. Also associates with pre-mRNA independent of ALYREF/THOC4. Involved in the nuclear export of intronless mRNA; the ATP-bound form is proposed to recruit export adapter ALYREF/THOC4 to intronless mRNA; its ATPase activity is cooperatively stimulated by RNA and ALYREF/THOC4 and ATP hydrolysis is thought to trigger the dissociation from RNA to allow the association of ALYREF/THOC4 and the NXF1-NXT1 heterodimer. Involved in transcription elongation and genome stability.

Cellular Location

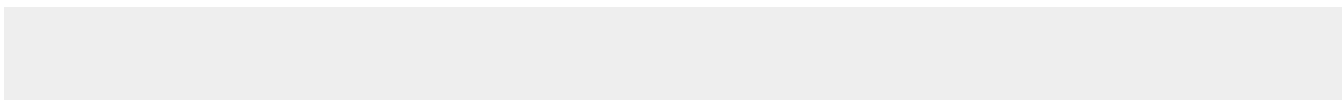
Nucleus. Nucleus speckle. Cytoplasm. Note=Can translocate to the cytoplasm in the presence of MX1. TREX complex assembly seems to occur in regions surrounding nuclear speckles known as perispeckles

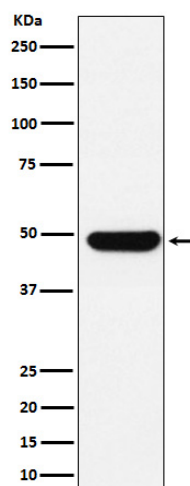
Anti-UAP56 Rabbit Monoclonal Antibody - Protocols

Provided below are standard protocols that you may find useful for product applications.

- [Western Blot](#)
- [Blocking Peptides](#)
- [Dot Blot](#)
- [Immunohistochemistry](#)
- [Immunofluorescence](#)
- [Immunoprecipitation](#)
- [Flow Cytometry](#)
- [Cell Culture](#)

Anti-UAP56 Rabbit Monoclonal Antibody - Images





Western blot analysis of UAP56 expression in K562 cell lysate.