

Anti-HLTF Rabbit Monoclonal Antibody Catalog # ABO15729

Specification

Anti-HLTF Rabbit Monoclonal Antibody - Product Information

Application	WB, IHC, IF, ICC
Primary Accession	Q14527
Host	Rabbit
Isotype	IgG
Reactivity	Rat, Human
Clonality	Monoclonal
Format	Liquid

Description

Anti-HLTF Rabbit Monoclonal Antibody . Tested in WB, IHC, ICC/IF applications. This antibody reacts with Human, Rat.

Anti-HLTF Rabbit Monoclonal Antibody - Additional Information

Gene ID 6596

Other Names

Helicase-like transcription factor, 2.3.2.27, 3.6.4.-, DNA-binding protein/plasminogen activator inhibitor 1 regulator, HIP116, RING finger protein 80, RING-type E3 ubiquitin transferase HLTF, SWI/SNF-related matrix-associated actin-dependent regulator of chromatin subfamily A member 3, Sucrose nonfermenting protein 2-like 3, HLTF, HIP116A, RNF80, SMARCA3, SNF2L3, ZBU1

Calculated MW

120 kDa KDa

Application Details

WB 1:1000-1:5000
IHC 1:50-1:200
ICC/IF 1:50-1:200

Contents

Rabbit IgG in phosphate buffered saline, pH 7.4, 150mM NaCl, 0.02% sodium azide and 50% glycerol, 0.4-0.5mg/ml BSA.

Immunogen

A synthesized peptide derived from human HLTF

Purification

Affinity-chromatography

Storage

Store at -20°C for one year. For short term storage and frequent use, store at 4°C for up to one month. Avoid repeated freeze-thaw cycles.

Anti-HLTF Rabbit Monoclonal Antibody - Protein Information

Name HLTF

Synonyms HIP116A, RNF80, SMARCA3, SNF2L3, ZBU1

Function

Has both helicase and E3 ubiquitin ligase activities. Possesses intrinsic ATP-dependent nucleosome-remodeling activity; This activity may be required for transcriptional activation or repression of specific target promoters (By similarity). These may include the SERPINE1 and HIV-1 promoters and the SV40 enhancer, to which this protein can bind directly. Plays a role in error-free postreplication repair (PRR) of damaged DNA and maintains genomic stability through acting as a ubiquitin ligase for 'Lys-63'-linked polyubiquitination of chromatin-bound PCNA.

Cellular Location

Cytoplasm. Nucleus. Nucleus, nucleolus Nucleus, nucleoplasm. Note=Nuclear localization is stimulated by progesterone.

Tissue Location

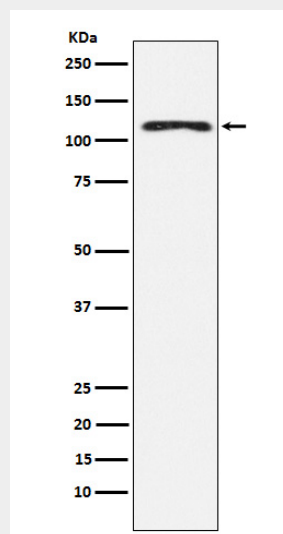
Expressed in brain, heart, kidney, liver, lung, pancreas, placenta and skeletal muscle.

Anti-HLTF Rabbit Monoclonal Antibody - Protocols

Provided below are standard protocols that you may find useful for product applications.

- [Western Blot](#)
- [Blocking Peptides](#)
- [Dot Blot](#)
- [Immunohistochemistry](#)
- [Immunofluorescence](#)
- [Immunoprecipitation](#)
- [Flow Cytometry](#)
- [Cell Culture](#)

Anti-HLTF Rabbit Monoclonal Antibody - Images



Western blot analysis of HLTF expression in K562 cell lysate.