

**Anti-CRABP1 Rabbit Monoclonal Antibody**  
Catalog # ABO15726

**Specification**

---

**Anti-CRABP1 Rabbit Monoclonal Antibody - Product Information**

Application	WB, IP
Primary Accession	<a href="#">P29762</a>
Host	Rabbit
Isotype	IgG
Reactivity	Human, Mouse
Clonality	Monoclonal
Format	Liquid

**Description**

Anti-CRABP1 Rabbit Monoclonal Antibody . Tested in WB, IP applications. This antibody reacts with Human, Mouse.

**Anti-CRABP1 Rabbit Monoclonal Antibody - Additional Information**

**Gene ID** 1381

**Other Names**

Cellular retinoic acid-binding protein 1, Cellular retinoic acid-binding protein I, CRABP-I, CRABP1, RBP5

**Calculated MW**

14 kDa KDa

**Application Details**

WB 1:500-1:2000<br>IP 1:50

**Contents**

Rabbit IgG in phosphate buffered saline, pH 7.4, 150mM NaCl, 0.02% sodium azide and 50% glycerol, 0.4-0.5mg/ml BSA.

**Immunogen**

A synthesized peptide derived from human CRABP1

**Purification**

Affinity-chromatography

Storage

**Store at -20°C for one year. For short term storage and frequent use, store at 4°C for up to one month. Avoid repeated freeze-thaw cycles.**

**Anti-CRABP1 Rabbit Monoclonal Antibody - Protein Information**

**Name** CRABP1

## Synonyms RBP5

### Function

Cytosolic CRABPs may regulate the access of retinoic acid to the nuclear retinoic acid receptors.

### Cellular Location

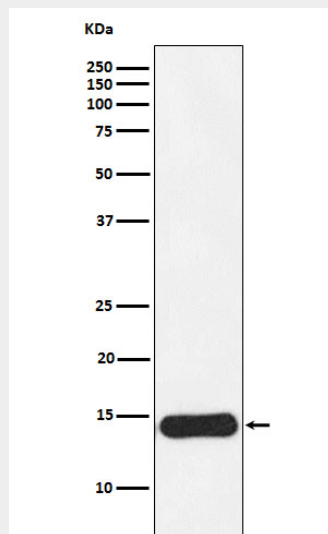
Cytoplasm.

## Anti-CRABP1 Rabbit Monoclonal Antibody - Protocols

Provided below are standard protocols that you may find useful for product applications.

- [Western Blot](#)
- [Blocking Peptides](#)
- [Dot Blot](#)
- [Immunohistochemistry](#)
- [Immunofluorescence](#)
- [Immunoprecipitation](#)
- [Flow Cytometry](#)
- [Cell Culture](#)

## Anti-CRABP1 Rabbit Monoclonal Antibody - Images



Western blot analysis of CRABP1 expression in MCF7 cell lysate.