

Anti-CDKN2C Rabbit Monoclonal Antibody Catalog # ABO15723

Specification

Anti-CDKN2C Rabbit Monoclonal Antibody - Product Information

Application	WB, IHC, IF, ICC, IP
Primary Accession	P42773
Host	Rabbit
Isotype	IgG
Reactivity	Rat, Human, Mouse
Clonality	Monoclonal
Format	Liquid

Description

Anti-CDKN2C Rabbit Monoclonal Antibody . Tested in WB, IHC, ICC/IF, IP applications. This antibody reacts with Human, Mouse, Rat.

Anti-CDKN2C Rabbit Monoclonal Antibody - Additional Information

Gene ID 1031

Other Names

Cyclin-dependent kinase 4 inhibitor C, Cyclin-dependent kinase 6 inhibitor, p18-INK4c, p18-INK6, CDKN2C, CDKN6

Calculated MW

18 kDa KDa

Application Details

WB 1:500-1:2000
IHC 1:50-1:200
ICC/IF 1:50-1:200
IP 1:40

Contents

Rabbit IgG in phosphate buffered saline, pH 7.4, 150mM NaCl, 0.02% sodium azide and 50% glycerol, 0.4-0.5mg/ml BSA.

Immunogen

A synthesized peptide derived from human CDKN2C

Purification

Affinity-chromatography

Storage

Store at -20°C for one year. For short term storage and frequent use, store at 4°C for up to one month. Avoid repeated freeze-thaw cycles.

Anti-CDKN2C Rabbit Monoclonal Antibody - Protein Information

Name CDKN2C

Synonyms CDKN6

Function

Interacts strongly with CDK6, weakly with CDK4. Inhibits cell growth and proliferation with a correlated dependence on endogenous retinoblastoma protein RB.

Tissue Location

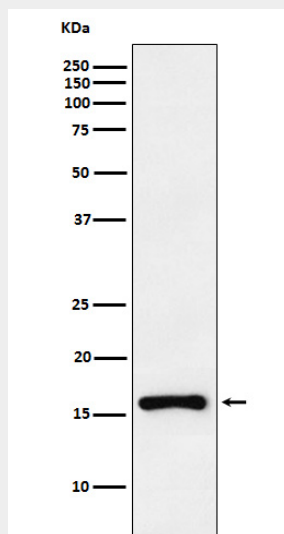
Highest levels found in skeletal muscle. Also found in pancreas and heart

Anti-CDKN2C Rabbit Monoclonal Antibody - Protocols

Provided below are standard protocols that you may find useful for product applications.

- [Western Blot](#)
- [Blocking Peptides](#)
- [Dot Blot](#)
- [Immunohistochemistry](#)
- [Immunofluorescence](#)
- [Immunoprecipitation](#)
- [Flow Cytometry](#)
- [Cell Culture](#)

Anti-CDKN2C Rabbit Monoclonal Antibody - Images



Western blot analysis of CDKN2C expression in Ramos cell lysate.