

Anti-ABCE1 Rabbit Monoclonal Antibody Catalog # ABO15710

Specification

Anti-ABCE1 Rabbit Monoclonal Antibody - Product Information

Application	WB, IHC, IF, ICC, IP, FC
Primary Accession	P61221
Host	Rabbit
Isotype	IgG
Reactivity	Rat, Human, Mouse
Clonality	Monoclonal
Format	Liquid

Description

Anti-ABCE1 Rabbit Monoclonal Antibody . Tested in WB, IHC, ICC/IF, IP, Flow Cytometry applications. This antibody reacts with Human, Mouse, Rat.

Anti-ABCE1 Rabbit Monoclonal Antibody - Additional Information

Gene ID 6059

Other Names

ATP-binding cassette sub-family E member 1, 3.6.5.-, 2'-5'-oligoadenylate-binding protein, HuHP68, RNase L inhibitor, Ribonuclease 4 inhibitor, RNS4I, ABCE1, RLI, RNASEL1, RNASELI, RNS4I

Calculated MW

67 kDa KDa

Application Details

WB 1:500-1:2000
IHC 1:50-1:200
ICC/IF 1:50-1:200
IP 1:50
FC 1:100

Contents

Rabbit IgG in phosphate buffered saline, pH 7.4, 150mM NaCl, 0.02% sodium azide and 50% glycerol, 0.4-0.5mg/ml BSA.

Immunogen

A synthesized peptide derived from human ABCE1

Purification

Affinity-chromatography

Storage

Store at -20°C for one year. For short term storage and frequent use, store at 4°C for up to one month. Avoid repeated freeze-thaw cycles.

Anti-ABCE1 Rabbit Monoclonal Antibody - Protein Information

Name ABCE1

Synonyms RLI, RNASEL1, RNASELI, RNS4I

Function

Nucleoside-triphosphatase (NTPase) involved in ribosome recycling by mediating ribosome disassembly (PubMed:20122402, PubMed:21448132). Able to hydrolyze ATP, GTP, UTP and CTP (PubMed:20122402). Splits ribosomes into free 60S subunits and tRNA- and mRNA-bound 40S subunits (PubMed:20122402, PubMed:21448132). Acts either after canonical termination facilitated by release factors (ETF1/eRF1) or after recognition of stalled and vacant ribosomes by mRNA surveillance factors (PELO/Pelota) (PubMed:20122402, PubMed:21448132). Involved in the No-Go Decay (NGD) pathway: recruited to stalled ribosomes by the Pelota-HBS1L complex, and drives the disassembly of stalled ribosomes, followed by degradation of damaged mRNAs as part of the NGD pathway (PubMed:21448132). Also plays a role in quality control of translation of mitochondrial outer membrane- localized mRNA (PubMed:29861391). As part of the PINK1-regulated signaling, ubiquitinated by CNOT4 upon mitochondria damage; this modification generates polyubiquitin signals that recruit autophagy receptors to the mitochondrial outer membrane and initiate mitophagy (PubMed:29861391). RNASEL-specific protein inhibitor which antagonizes the binding of 2-5A (5'-phosphorylated 2',5'-linked oligoadenylates) to RNASEL (PubMed:9660177). Negative regulator of the anti-viral effect of the interferon-regulated 2-5A/RNASEL pathway (PubMed:11585831, PubMed:9660177, PubMed:9847332).

Cellular Location

Cytoplasm. Mitochondrion

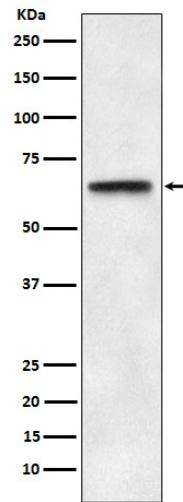
Anti-ABCE1 Rabbit Monoclonal Antibody - Protocols

Provided below are standard protocols that you may find useful for product applications.

- [Western Blot](#)
- [Blocking Peptides](#)
- [Dot Blot](#)
- [Immunohistochemistry](#)
- [Immunofluorescence](#)
- [Immunoprecipitation](#)
- [Flow Cytometry](#)
- [Cell Culture](#)

Anti-ABCE1 Rabbit Monoclonal Antibody - Images





Western blot analysis of ABCE1 expression in HeLa cell lysate.