

Anti-TCF21 Rabbit Monoclonal Antibody
Catalog # ABO15704**Specification**

Anti-TCF21 Rabbit Monoclonal Antibody - Product Information

Application	WB, IP, FC
Primary Accession	O43680
Host	Rabbit
Isotype	IgG
Reactivity	Human
Clonality	Monoclonal
Format	Liquid

Description

Anti-TCF21 Rabbit Monoclonal Antibody . Tested in WB, IP, Flow Cytometry applications. This antibody reacts with Human.

Anti-TCF21 Rabbit Monoclonal Antibody - Additional Information

Gene ID 6943

Other Names

Transcription factor 21, TCF-21, Capsulin, Class A basic helix-loop-helix protein 23, bHLHa23, Epicardin, Podocyte-expressed 1, Pod-1, TCF21, BHLHA23, POD1

Calculated MW

26 kDa KDa

Application Details

WB 1:500-1:2000
IP 1:60
FC 1:80

Contents

Rabbit IgG in phosphate buffered saline, pH 7.4, 150mM NaCl, 0.02% sodium azide and 50% glycerol, 0.4-0.5mg/ml BSA.

Immunogen

A synthesized peptide derived from human TCF21

Purification

Affinity-chromatography

Storage

Store at -20°C for one year. For short term storage and frequent use, store at 4°C for up to one month. Avoid repeated freeze-thaw cycles.

Anti-TCF21 Rabbit Monoclonal Antibody - Protein Information

Name TCF21

Synonyms BHLHA23, POD1

Function

Involved in epithelial-mesenchymal interactions in kidney and lung morphogenesis that include epithelial differentiation and branching morphogenesis. May play a role in the specification or differentiation of one or more subsets of epicardial cell types.

Cellular Location

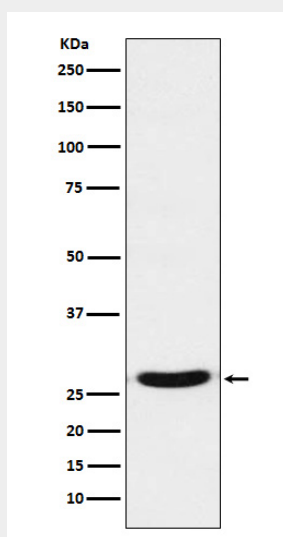
Nucleus.

Anti-TCF21 Rabbit Monoclonal Antibody - Protocols

Provided below are standard protocols that you may find useful for product applications.

- [Western Blot](#)
- [Blocking Peptides](#)
- [Dot Blot](#)
- [Immunohistochemistry](#)
- [Immunofluorescence](#)
- [Immunoprecipitation](#)
- [Flow Cytometry](#)
- [Cell Culture](#)

Anti-TCF21 Rabbit Monoclonal Antibody - Images



Western blot analysis of TCF21 expression in 293 cell lysate.