

Anti-CBX2 Rabbit Monoclonal Antibody Catalog # ABO15700

Specification

Anti-CBX2 Rabbit Monoclonal Antibody - Product Information

Application	WB, FC
Primary Accession	Q14781
Host	Rabbit
Isotype	IgG
Reactivity	Rat, Human, Mouse
Clonality	Monoclonal
Format	Liquid

Description

Anti-CBX2 Rabbit Monoclonal Antibody . Tested in WB, Flow Cytometry applications. This antibody reacts with Human, Mouse, Rat.

Anti-CBX2 Rabbit Monoclonal Antibody - Additional Information

Gene ID 84733

Other Names

Chromobox protein homolog 2, CBX2

Calculated MW

56 kDa KDa

Application Details

WB 1:1000-1:5000
FC 1:150

Contents

Rabbit IgG in phosphate buffered saline, pH 7.4, 150mM NaCl, 0.02% sodium azide and 50% glycerol, 0.4-0.5mg/ml BSA.

Immunogen

A synthesized peptide derived from human CBX2

Purification

Affinity-chromatography

Storage

Store at -20°C for one year. For short term storage and frequent use, store at 4°C for up to one month. Avoid repeated freeze-thaw cycles.

Anti-CBX2 Rabbit Monoclonal Antibody - Protein Information

Name CBX2

Function

Component of a Polycomb group (PcG) multiprotein PRC1-like complex, a complex class required to maintain the transcriptionally repressive state of many genes, including Hox genes, throughout development (PubMed:21282530). PcG PRC1 complex acts via chromatin remodeling and modification of histones; it mediates monoubiquitination of histone H2A 'Lys-119', rendering chromatin heritably changed in its expressibility (PubMed:21282530). Binds to histone H3 trimethylated at 'Lys-9' (H3K9me3) or at 'Lys-27' (H3K27me3) (By similarity). Plays a role in the lineage differentiation of the germ layers in embryonic development (By similarity). Involved in sexual development, acting as activator of NR5A1 expression (PubMed:19361780).

Cellular Location

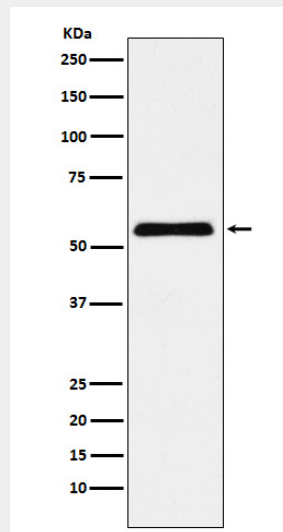
Nucleus. Chromosome Note=Localized in distinct foci on chromatin and in chromocenters
Localizes to the inactive X chromosome. Seems to be recruited to H3K27me3, H3K9ac and H3K3me2 sites on chromatin

Anti-CBX2 Rabbit Monoclonal Antibody - Protocols

Provided below are standard protocols that you may find useful for product applications.

- [Western Blot](#)
- [Blocking Peptides](#)
- [Dot Blot](#)
- [Immunohistochemistry](#)
- [Immunofluorescence](#)
- [Immunoprecipitation](#)
- [Flow Cytometry](#)
- [Cell Culture](#)

Anti-CBX2 Rabbit Monoclonal Antibody - Images



Western blot analysis of CBX2 expression in HeLa cell lysate.