

Anti-ZA2G / AZGP1 Rabbit Monoclonal Antibody
Catalog # ABO15696

Specification

Anti-ZA2G / AZGP1 Rabbit Monoclonal Antibody - Product Information

Application	WB, IHC, IP
Primary Accession	P25311
Host	Rabbit
Isotype	IgG
Reactivity	Human
Clonality	Monoclonal
Format	Liquid

Description

Anti-ZA2G / AZGP1 Rabbit Monoclonal Antibody . Tested in WB, IHC, IP applications. This antibody reacts with Human.

Anti-ZA2G / AZGP1 Rabbit Monoclonal Antibody - Additional Information

Gene ID 563

Other Names

Zinc-alpha-2-glycoprotein, Zn-alpha-2-GP, Zn-alpha-2-glycoprotein, AZGP1, ZAG, ZNGP1

Calculated MW

43 kDa KDa

Application Details

WB 1:500-1:2000
IHC 1:50-1:200
IP 1:40

Contents

Rabbit IgG in phosphate buffered saline, pH 7.4, 150mM NaCl, 0.02% sodium azide and 50% glycerol, 0.4-0.5mg/ml BSA.

Immunogen

A synthesized peptide derived from human ZA2G / AZGP1

Purification

Affinity-chromatography

Storage

Store at -20°C for one year. For short term storage and frequent use, store at 4°C for up to one month. Avoid repeated freeze-thaw cycles.

Anti-ZA2G / AZGP1 Rabbit Monoclonal Antibody - Protein Information

Name AZGP1

Synonyms ZAG, ZNGP1

Function

Stimulates lipid degradation in adipocytes and causes the extensive fat losses associated with some advanced cancers. May bind polyunsaturated fatty acids.

Cellular Location

Secreted.

Tissue Location

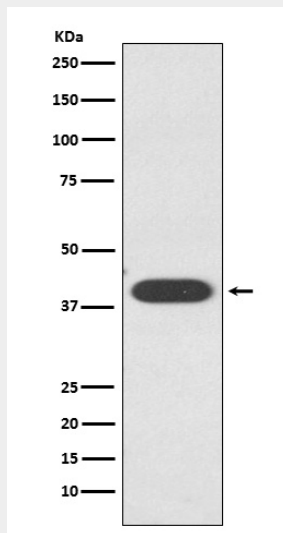
Blood plasma, seminal plasma, urine, saliva, sweat, epithelial cells of various human glands, liver

Anti-ZA2G / AZGP1 Rabbit Monoclonal Antibody - Protocols

Provided below are standard protocols that you may find useful for product applications.

- [Western Blot](#)
- [Blocking Peptides](#)
- [Dot Blot](#)
- [Immunohistochemistry](#)
- [Immunofluorescence](#)
- [Immunoprecipitation](#)
- [Flow Cytometry](#)
- [Cell Culture](#)

Anti-ZA2G / AZGP1 Rabbit Monoclonal Antibody - Images



Western blot analysis of ZA2G / AZGP1 expression in HepG2 cell lysate.