

Anti-BCL2L12 Rabbit Monoclonal Antibody
Catalog # ABO15679**Specification****Anti-BCL2L12 Rabbit Monoclonal Antibody - Product Information**

Application	WB, IHC, IF, ICC, IP, FC
Primary Accession	Q9HB09
Host	Rabbit
Isotype	IgG
Reactivity	Human
Clonality	Monoclonal
Format	Liquid

Description

Anti-BCL2L12 Rabbit Monoclonal Antibody . Tested in WB, IHC, ICC/IF, IP, Flow Cytometry applications. This antibody reacts with Human.

Anti-BCL2L12 Rabbit Monoclonal Antibody - Additional Information

Gene ID 83596

Other Names

Bcl-2-like protein 12, Bcl2-L-12, Bcl-2-related proline-rich protein, BCL2L12 (http://www.genenames.org/cgi-bin/gene_symbol_report?hgnc_id=13787), BPR

Calculated MW

32 kDa KDa

Application Details

WB 1:500-1:2000
IHC 1:50-1:200
ICC/IF 1:50-1:200
IP 1:50
FC 1:50

Contents

Rabbit IgG in phosphate buffered saline, pH 7.4, 150mM NaCl, 0.02% sodium azide and 50% glycerol, 0.4-0.5mg/ml BSA.

Immunogen

A synthesized peptide derived from human BCL2L12

Purification

Affinity-chromatography

Storage

Store at -20°C for one year. For short term storage and frequent use, store at 4°C for up to one month. Avoid repeated freeze-thaw cycles.

Anti-BCL2L12 Rabbit Monoclonal Antibody - Protein Information

Name BCL2L12 ([HGNC:13787](#))

Synonyms BPR

Tissue Location

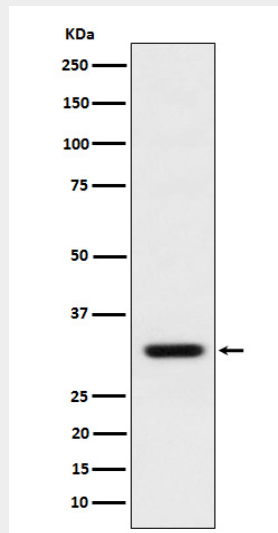
Expressed mainly in breast, thymus, prostate, fetal liver, colon, placenta, pancreas, small intestine, spinal cord, kidney, and bone marrow and to a lesser extent in many other tissues. Isoform 2 is primarily expressed in skeletal muscle

Anti-BCL2L12 Rabbit Monoclonal Antibody - Protocols

Provided below are standard protocols that you may find useful for product applications.

- [Western Blot](#)
- [Blocking Peptides](#)
- [Dot Blot](#)
- [Immunohistochemistry](#)
- [Immunofluorescence](#)
- [Immunoprecipitation](#)
- [Flow Cytometry](#)
- [Cell Culture](#)

Anti-BCL2L12 Rabbit Monoclonal Antibody - Images



Western blot analysis of BCL2L12 expression in MCF7 cell lysate.