

Anti-TIMM50 Rabbit Monoclonal Antibody
Catalog # ABO15678

Specification

Anti-TIMM50 Rabbit Monoclonal Antibody - Product Information

Application	WB, IHC
Primary Accession	O3ZCQ8
Host	Rabbit
Isotype	IgG
Reactivity	Human, Mouse
Clonality	Monoclonal
Format	Liquid

Description

Anti-TIMM50 Rabbit Monoclonal Antibody . Tested in WB, IHC applications. This antibody reacts with Human, Mouse.

Anti-TIMM50 Rabbit Monoclonal Antibody - Additional Information

Gene ID 92609

Other Names

Mitochondrial import inner membrane translocase subunit TIM50, TIMM50, TIM50

Calculated MW

36 kDa KDa

Application Details

WB 1:500-1:2000
IHC 1:50-1:200

Contents

Rabbit IgG in phosphate buffered saline, pH 7.4, 150mM NaCl, 0.02% sodium azide and 50% glycerol, 0.4-0.5mg/ml BSA.

Immunogen

A synthesized peptide derived from human TIMM50

Purification

Affinity-chromatography

Storage

Store at -20°C for one year. For short term storage and frequent use, store at 4°C for up to one month. Avoid repeated freeze-thaw cycles.

Anti-TIMM50 Rabbit Monoclonal Antibody - Protein Information

Name TIMM50

Synonyms TIM50

Function

Essential component of the TIM23 complex, a complex that mediates the translocation of transit peptide-containing proteins across the mitochondrial inner membrane. Has some phosphatase activity in vitro; however such activity may not be relevant in vivo.

Cellular Location

Mitochondrion inner membrane; Single-pass membrane protein

Tissue Location

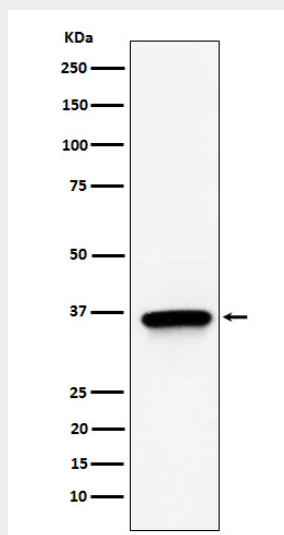
Widely expressed. Expressed at higher level in brain, kidney and liver (at protein level)

Anti-TIMM50 Rabbit Monoclonal Antibody - Protocols

Provided below are standard protocols that you may find useful for product applications.

- [Western Blot](#)
- [Blocking Peptides](#)
- [Dot Blot](#)
- [Immunohistochemistry](#)
- [Immunofluorescence](#)
- [Immunoprecipitation](#)
- [Flow Cytometry](#)
- [Cell Culture](#)

Anti-TIMM50 Rabbit Monoclonal Antibody - Images



Western blot analysis of TIMM50 expression in 293T cell lysate.