

**Anti-BMP15 Rabbit Monoclonal Antibody**  
Catalog # ABO15674

**Specification**

---

**Anti-BMP15 Rabbit Monoclonal Antibody - Product Information**

Application	WB, FC
Primary Accession	<a href="#">O95972</a>
Host	Rabbit
Isotype	IgG
Reactivity	Rat, Human, Mouse
Clonality	Monoclonal
Format	Liquid

**Description**

Anti-BMP15 Rabbit Monoclonal Antibody . Tested in WB, Flow Cytometry applications. This antibody reacts with Human, Mouse, Rat.

**Anti-BMP15 Rabbit Monoclonal Antibody - Additional Information**

**Gene ID** 9210

**Other Names**

Bone morphogenetic protein 15, BMP-15, Growth/differentiation factor 9B, GDF-9B, BMP15, GDF9B

**Calculated MW**

50 kDa KDa

**Application Details**

WB 1:500-1:2000<br>FC 1:50

**Contents**

Rabbit IgG in phosphate buffered saline, pH 7.4, 150mM NaCl, 0.02% sodium azide and 50% glycerol, 0.4-0.5mg/ml BSA.

**Immunogen**

A synthesized peptide derived from human BMP15

**Purification**

Affinity-chromatography

Storage

**Store at -20°C for one year. For short term storage and frequent use, store at 4°C for up to one month. Avoid repeated freeze-thaw cycles.**

**Anti-BMP15 Rabbit Monoclonal Antibody - Protein Information**

**Name** BMP15

## Synonyms GDF9B

### Function

May be involved in follicular development. Oocyte-specific growth/differentiation factor that stimulates folliculogenesis and granulosa cell (GC) growth.

### Cellular Location

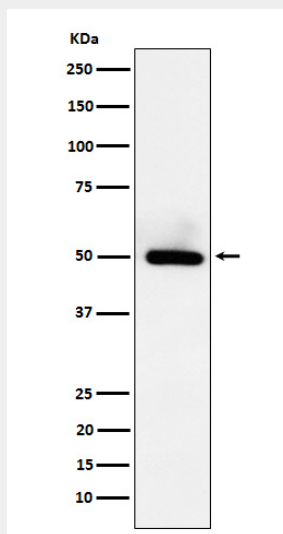
Secreted.

## Anti-BMP15 Rabbit Monoclonal Antibody - Protocols

Provided below are standard protocols that you may find useful for product applications.

- [Western Blot](#)
- [Blocking Peptides](#)
- [Dot Blot](#)
- [Immunohistochemistry](#)
- [Immunofluorescence](#)
- [Immunoprecipitation](#)
- [Flow Cytometry](#)
- [Cell Culture](#)

## Anti-BMP15 Rabbit Monoclonal Antibody - Images



Western blot analysis of BMP15 expression in HeLa cell lysate.