

## Anti-MRC2/ENDO180 Rabbit Monoclonal Antibody Catalog # ABO15662

### Specification

---

#### Anti-MRC2/ENDO180 Rabbit Monoclonal Antibody - Product Information

Application	WB
Primary Accession	<a href="#">Q9UBG0</a>
Host	Rabbit
Isotype	IgG
Reactivity	Human
Clonality	Monoclonal
Format	Liquid

#### Description

Anti-MRC2/ENDO180 Rabbit Monoclonal Antibody . Tested in WB application. This antibody reacts with Human.

#### Anti-MRC2/ENDO180 Rabbit Monoclonal Antibody - Additional Information

Gene ID 9902

#### Other Names

C-type mannose receptor 2, C-type lectin domain family 13 member E, Endocytic receptor 180, Macrophage mannose receptor 2, Urokinase-type plasminogen activator receptor-associated protein, UPAR-associated protein, Urokinase receptor-associated protein, CD280, MRC2, CLEC13E, ENDO180, KIAA0709, UPARAP

#### Calculated MW

190 kDa KDa

#### Application Details

WB 1:500-1:2000

#### Contents

Rabbit IgG in phosphate buffered saline, pH 7.4, 150mM NaCl, 0.02% sodium azide and 50% glycerol, 0.4-0.5mg/ml BSA.

#### Immunogen

A synthesized peptide derived from human MRC2

#### Purification

Affinity-chromatography

#### Storage

Store at -20°C for one year. For short term storage and frequent use, store at 4°C for up to one month. Avoid repeated freeze-thaw cycles.

#### Anti-MRC2/ENDO180 Rabbit Monoclonal Antibody - Protein Information

**Name** MRC2

**Synonyms** CLEC13E, ENDO180, KIAA0709, UPARAP

**Function**

May play a role as endocytotic lectin receptor displaying calcium-dependent lectin activity. Internalizes glycosylated ligands from the extracellular space for release in an endosomal compartment via clathrin-mediated endocytosis. May be involved in plasminogen activation system controlling the extracellular level of PLAU/PLA2, and thus may regulate protease activity at the cell surface. May contribute to cellular uptake, remodeling and degradation of extracellular collagen matrices. May play a role during cancer progression as well as in other chronic tissue destructive diseases acting on collagen turnover. May participate in remodeling of extracellular matrix cooperating with the matrix metalloproteinases (MMPs).

**Cellular Location**

Membrane; Single-pass type I membrane protein.

**Tissue Location**

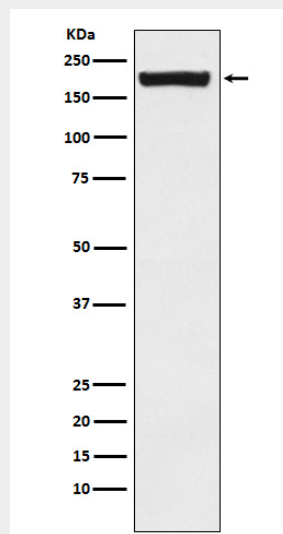
Ubiquitous with low expression in brain, placenta, lung, kidney, pancreas, spleen, thymus and colon. Expressed in endothelial cells, fibroblasts and macrophages. Highly expressed in fetal lung and kidney.

**Anti-MRC2/ENDO180 Rabbit Monoclonal Antibody - Protocols**

Provided below are standard protocols that you may find useful for product applications.

- [Western Blot](#)
- [Blocking Peptides](#)
- [Dot Blot](#)
- [Immunohistochemistry](#)
- [Immunofluorescence](#)
- [Immunoprecipitation](#)
- [Flow Cytometry](#)
- [Cell Culture](#)

**Anti-MRC2/ENDO180 Rabbit Monoclonal Antibody - Images**



Western blot analysis of MRC2/ENDO180 expression in Saos2 cell lysate.