

Anti-RING1 Rabbit Monoclonal Antibody
Catalog # ABO15657**Specification****Anti-RING1 Rabbit Monoclonal Antibody - Product Information**

Application	WB, IHC, IF, ICC
Primary Accession	Q06587
Host	Rabbit
Isotype	IgG
Reactivity	Human
Clonality	Monoclonal
Format	Liquid

Description

Anti-RING1 Rabbit Monoclonal Antibody . Tested in WB, IHC, ICC/IF applications. This antibody reacts with Human.

Anti-RING1 Rabbit Monoclonal Antibody - Additional Information

Gene ID 6015

Other Names

E3 ubiquitin-protein ligase RING1, 2.3.2.27, Polycomb complex protein RING1, RING finger protein 1, RING-type E3 ubiquitin transferase RING1, Really interesting new gene 1 protein, RING1 (http://www.genenames.org/cgi-bin/gene_symbol_report?hgnc_id=10018)
target="_blank">HGNC:10018)

Calculated MW

50 kDa KDa

Application Details

WB 1:500-1:2000
IHC 1:50-1:200
ICC/IF 1:50-1:200

Contents

Rabbit IgG in phosphate buffered saline, pH 7.4, 150mM NaCl, 0.02% sodium azide and 50% glycerol, 0.4-0.5mg/ml BSA.

Immunogen

A synthesized peptide derived from human RING1

Purification

Affinity-chromatography

Storage

Store at -20°C for one year. For short term storage and frequent use, store at 4°C for up to one month. Avoid repeated freeze-thaw cycles.

Anti-RING1 Rabbit Monoclonal Antibody - Protein Information

Name RING1 ([HGNC:10018](#))

Function

Constitutes one of the E3 ubiquitin-protein ligases that mediate monoubiquitination of 'Lys-119' of histone H2A, thereby playing a central role in histone code and gene regulation. H2A 'Lys-119' ubiquitination gives a specific tag for epigenetic transcriptional repression and participates in X chromosome inactivation of female mammals. Essential component of a Polycomb group (PcG) multiprotein PRC1-like complex, a complex class required to maintain the transcriptionally repressive state of many genes, including Hox genes, throughout development. PcG PRC1 complex acts via chromatin remodeling and modification of histones, rendering chromatin heritably changed in its expressibility. Compared to RNF2/RING2, it does not have the main E3 ubiquitin ligase activity on histone H2A, and it may rather act as a modulator of RNF2/RING2 activity.

Cellular Location

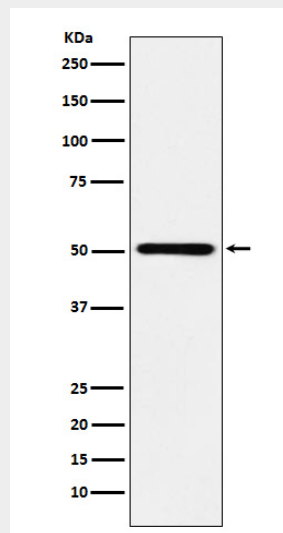
Nucleus. Nucleus speckle

Anti-RING1 Rabbit Monoclonal Antibody - Protocols

Provided below are standard protocols that you may find useful for product applications.

- [Western Blot](#)
- [Blocking Peptides](#)
- [Dot Blot](#)
- [Immunohistochemistry](#)
- [Immunofluorescence](#)
- [Immunoprecipitation](#)
- [Flow Cytometry](#)
- [Cell Culture](#)

Anti-RING1 Rabbit Monoclonal Antibody - Images



Western blot analysis of RING1 expression in Ramos cell lysate.