

Anti-IKZF3 Rabbit Monoclonal Antibody Catalog # ABO15646

Specification

Anti-IKZF3 Rabbit Monoclonal Antibody - Product Information

Application	WB, IHC, IF, ICC, FC
Primary Accession	Q9UKT9
Host	Rabbit
Isotype	IgG
Reactivity	Rat, Human, Mouse
Clonality	Monoclonal
Format	Liquid

Description

Anti-IKZF3 Rabbit Monoclonal Antibody . Tested in WB, IHC, ICC/IF, Flow Cytometry applications. This antibody reacts with Human, Mouse, Rat.

Anti-IKZF3 Rabbit Monoclonal Antibody - Additional Information

Gene ID 22806

Other Names

Zinc finger protein Aiolos, Ikaros family zinc finger protein 3, IKZF3, ZNFN1A3

Calculated MW

65 kDa KDa

Application Details

WB 1:1000-1:5000
IHC 1:50-1:200
ICC/IF 1:50-1:200
FC 1:50

Contents

Rabbit IgG in phosphate buffered saline, pH 7.4, 150mM NaCl, 0.02% sodium azide and 50% glycerol, 0.4-0.5mg/ml BSA.

Immunogen

A synthesized peptide derived from human IKZF3

Purification

Affinity-chromatography

Storage

Store at -20°C for one year. For short term storage and frequent use, store at 4°C for up to one month. Avoid repeated freeze-thaw cycles.

Anti-IKZF3 Rabbit Monoclonal Antibody - Protein Information

Name IKZF3

Synonyms ZNFN1A3

Function

Transcription factor that plays an important role in the regulation of lymphocyte differentiation. Plays an essential role in regulation of B-cell differentiation, proliferation and maturation to an effector state. Involved in regulating BCL2 expression and controlling apoptosis in T-cells in an IL2-dependent manner.

Cellular Location

Nucleus. Cytoplasm [Isoform 3]: Nucleus [Isoform 14]: Nucleus. Cytoplasm

Tissue Location

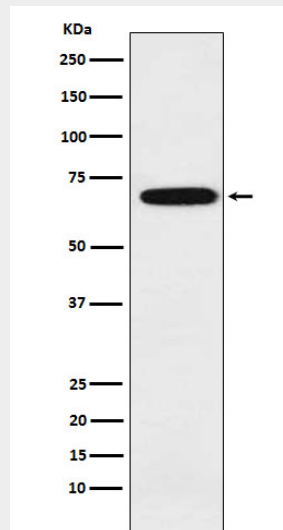
Expressed most strongly in peripheral blood leukocytes, the spleen, and the thymus.

Anti-IKZF3 Rabbit Monoclonal Antibody - Protocols

Provided below are standard protocols that you may find useful for product applications.

- [Western Blot](#)
- [Blocking Peptides](#)
- [Dot Blot](#)
- [Immunohistochemistry](#)
- [Immunofluorescence](#)
- [Immunoprecipitation](#)
- [Flow Cytometry](#)
- [Cell Culture](#)

Anti-IKZF3 Rabbit Monoclonal Antibody - Images



Western blot analysis of IKZF3 expression in Ramos cell lysate.