

**Anti-GSTM1 Rabbit Monoclonal Antibody**  
Catalog # ABO15635**Specification****Anti-GSTM1 Rabbit Monoclonal Antibody - Product Information**

Application	WB
Primary Accession	<a href="#">P09488</a>
Host	Rabbit
Isotype	IgG
Reactivity	Rat, Human, Mouse
Clonality	Monoclonal
Format	Liquid

**Description**

Anti-GSTM1 Rabbit Monoclonal Antibody . Tested in WB application. This antibody reacts with Human, Mouse, Rat.

**Anti-GSTM1 Rabbit Monoclonal Antibody - Additional Information**

**Gene ID** 2944

**Other Names**

Glutathione S-transferase Mu 1, 2.5.1.18, GST HB subunit 4, GST class-mu 1, GSTM1-1, GSTM1a-1a, GSTM1b-1b, GTH4, GSTM1 ([http://www.genenames.org/cgi-bin/gene\\_symbol\\_report?hgnc\\_id=4632](http://www.genenames.org/cgi-bin/gene_symbol_report?hgnc_id=4632) target="\_blank">HGNC:4632</a>), GST1

**Calculated MW**

26 kDa KDa

**Application Details**

WB 1:500-1:2000

**Contents**

Rabbit IgG in phosphate buffered saline, pH 7.4, 150mM NaCl, 0.02% sodium azide and 50% glycerol, 0.4-0.5mg/ml BSA.

**Immunogen**

A synthesized peptide derived from human Glutathione S Transferase mu

**Purification**

Affinity-chromatography

**Storage**

**Store at -20°C for one year. For short term storage and frequent use, store at 4°C for up to one month. Avoid repeated freeze-thaw cycles.**

**Anti-GSTM1 Rabbit Monoclonal Antibody - Protein Information**

**Name** GSTM1 ([HGNC:4632](#))

**Synonyms** GST1

**Function**

Conjugation of reduced glutathione to a wide number of exogenous and endogenous hydrophobic electrophiles. Involved in the formation of glutathione conjugates of both prostaglandin A2 (PGA2) and prostaglandin J2 (PGJ2) (PubMed:<a href="http://www.uniprot.org/citations/9084911" target="\_blank">9084911</a>). Participates in the formation of novel hepoxilin regioisomers (PubMed:<a href="http://www.uniprot.org/citations/21046276" target="\_blank">21046276</a>).

**Cellular Location**

Cytoplasm.

**Tissue Location**

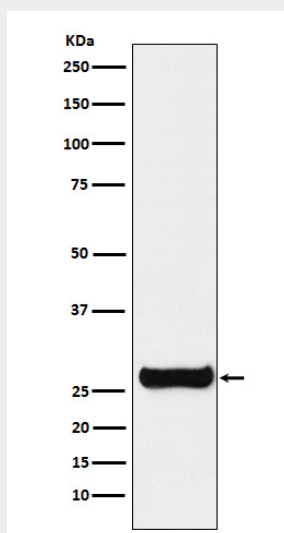
Liver (at protein level).

**Anti-GSTM1 Rabbit Monoclonal Antibody - Protocols**

Provided below are standard protocols that you may find useful for product applications.

- [Western Blot](#)
- [Blocking Peptides](#)
- [Dot Blot](#)
- [Immunohistochemistry](#)
- [Immunofluorescence](#)
- [Immunoprecipitation](#)
- [Flow Cytometry](#)
- [Cell Culture](#)

**Anti-GSTM1 Rabbit Monoclonal Antibody - Images**



Western blot analysis of GSTM1 expression in SH-SY5Y cell lysate.