

**Anti-ABAT Rabbit Monoclonal Antibody**  
Catalog # ABO15629**Specification****Anti-ABAT Rabbit Monoclonal Antibody - Product Information**

Application	WB, IHC, IP
Primary Accession	<a href="#">P80404</a>
Host	Rabbit
Isotype	IgG
Reactivity	Rat, Human, Mouse
Clonality	Monoclonal
Format	Liquid

**Description**

Anti-ABAT Rabbit Monoclonal Antibody . Tested in WB, IHC, IP applications. This antibody reacts with Human, Mouse, Rat.

**Anti-ABAT Rabbit Monoclonal Antibody - Additional Information****Gene ID 18****Other Names**

4-aminobutyrate aminotransferase, mitochondrial, 2.6.1.19, (S)-3-amino-2-methylpropionate transaminase, 2.6.1.22, GABA aminotransferase, GABA-AT, Gamma-amino-N-butyrate transaminase, GABA transaminase, GABA-T, L-AIBAT, ABAT ([HGNC:23](http://www.genenames.org/cgi-bin/gene_symbol_report?hgnc_id=23)), GABAT

**Calculated MW**

54 kDa KDa

**Application Details**

WB 1:500-1:2000<br>IHC 1:50-1:200<br>IP 1:50

**Contents**

Rabbit IgG in phosphate buffered saline, pH 7.4, 150mM NaCl, 0.02% sodium azide and 50% glycerol, 0.4-0.5mg/ml BSA.

**Immunogen**

A synthesized peptide derived from human ABAT

**Purification**

Affinity-chromatography

**Storage**

**Store at -20°C for one year. For short term storage and frequent use, store at 4°C for up to one month. Avoid repeated freeze-thaw cycles.**

**Anti-ABAT Rabbit Monoclonal Antibody - Protein Information**

**Name** ABAT ([HGNC:23](#))

**Synonyms** GABAT

### Function

Catalyzes the conversion of gamma-aminobutyrate and L-beta- aminoisobutyrate to succinate semialdehyde and methylmalonate semialdehyde, respectively (PubMed:<a href="http://www.uniprot.org/citations/10407778" target="\_blank">10407778</a>, PubMed:<a href="http://www.uniprot.org/citations/15528998" target="\_blank">15528998</a>). Can also convert delta-aminovalerate and beta-alanine (By similarity).

### Cellular Location

Mitochondrion matrix.

### Tissue Location

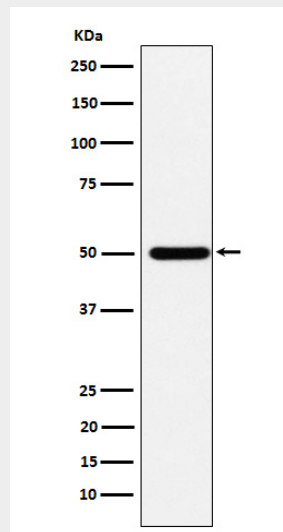
Liver > pancreas > brain > kidney > heart > placenta.

## Anti-ABAT Rabbit Monoclonal Antibody - Protocols

Provided below are standard protocols that you may find useful for product applications.

- [Western Blot](#)
- [Blocking Peptides](#)
- [Dot Blot](#)
- [Immunohistochemistry](#)
- [Immunofluorescence](#)
- [Immunoprecipitation](#)
- [Flow Cytometry](#)
- [Cell Culture](#)

## Anti-ABAT Rabbit Monoclonal Antibody - Images



Western blot analysis of ABAT expression in HepG2 cell lysate.