

**Anti-NRG3 Rabbit Monoclonal Antibody**  
**Catalog # ABO15627****Specification**

---

**Anti-NRG3 Rabbit Monoclonal Antibody - Product Information**

Application	WB, FC
Primary Accession	<a href="#">P56975</a>
Host	Rabbit
Isotype	IgG
Reactivity	Rat, Human, Mouse
Clonality	Monoclonal
Format	Liquid

**Description**

Anti-NRG3 Rabbit Monoclonal Antibody . Tested in WB, Flow Cytometry applications. This antibody reacts with Human, Mouse, Rat.

**Anti-NRG3 Rabbit Monoclonal Antibody - Additional Information**

**Gene ID** 10718

**Other Names**

Pro-neuregulin-3, membrane-bound isoform, Pro-NRG3, Neuregulin-3, NRG-3, NRG3

**Calculated MW**

56 kDa KDa

**Application Details**

WB 1:500-1:2000<br>FC 1:50

**Contents**

Rabbit IgG in phosphate buffered saline, pH 7.4, 150mM NaCl, 0.02% sodium azide and 50% glycerol, 0.4-0.5mg/ml BSA.

**Immunogen**

A synthesized peptide derived from human NRG3

**Purification**

Affinity-chromatography

**Storage**

**Store at -20°C for one year. For short term storage and frequent use, store at 4°C for up to one month. Avoid repeated freeze-thaw cycles.**

**Anti-NRG3 Rabbit Monoclonal Antibody - Protein Information**

**Name** NRG3

**Function**

Direct ligand for the ERBB4 tyrosine kinase receptor. Binding results in ligand-stimulated tyrosine phosphorylation and activation of the receptor. Does not bind to the EGF receptor, ERBB2 or ERBB3 receptors. May be a survival factor for oligodendrocytes.

**Cellular Location**

[Pro-neuregulin-3, membrane-bound isoform]: Cell membrane; Single-pass type I membrane protein. Note=Does not seem to be active. [Isoform 3]: Cell membrane; Single-pass type I membrane protein. Note=Isoform 3 is also proteolytically released as a soluble form

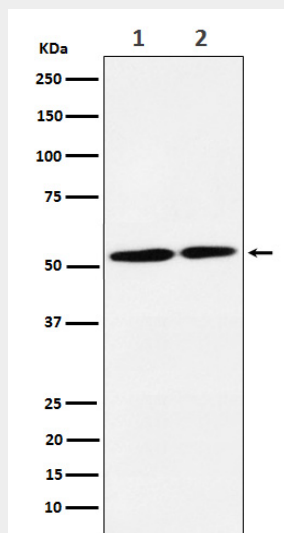
**Tissue Location**

Highly expressed in most regions of the brain with the exception of corpus callosum. Expressed at lower level in testis Not detected in heart, placenta, lung, liver, skeletal muscle, kidney, pancreas, spleen, thymus, prostate, ovary, small intestine, colon and peripheral blood leukocytes

**Anti-NGR3 Rabbit Monoclonal Antibody - Protocols**

Provided below are standard protocols that you may find useful for product applications.

- [Western Blot](#)
- [Blocking Peptides](#)
- [Dot Blot](#)
- [Immunohistochemistry](#)
- [Immunofluorescence](#)
- [Immunoprecipitation](#)
- [Flow Cytometry](#)
- [Cell Culture](#)

**Anti-NGR3 Rabbit Monoclonal Antibody - Images**

Western blot analysis of NRG3 expression in (1) SH-SY5Y cell lysate; (2) C6 cell lysate.