

## Anti-Lactoferrin Rabbit Monoclonal Antibody Catalog # ABO15624

### Specification

---

#### Anti-Lactoferrin Rabbit Monoclonal Antibody - Product Information

Application	WB, IF, ICC, IP
Primary Accession	<a href="#">P02788</a>
Host	Rabbit
Isotype	IgG
Reactivity	Human
Clonality	Monoclonal
Format	Liquid

#### Description

Anti-Lactoferrin Rabbit Monoclonal Antibody . Tested in WB, ICC/IF, IP applications. This antibody reacts with Human.

#### Anti-Lactoferrin Rabbit Monoclonal Antibody - Additional Information

Gene ID 4057

#### Other Names

Lactotransferrin, Lactoferrin, 3.4.21.-, Growth-inhibiting protein 12, Talalactoferrin, Lactoferricin-H, Lfcin-H, Kaliocin-1, Lactoferroxin-A, Lactoferroxin-B, Lactoferroxin-C, LTF ([http://www.genenames.org/cgi-bin/gene\\_symbol\\_report?hgnc\\_id=6720](http://www.genenames.org/cgi-bin/gene_symbol_report?hgnc_id=6720)), HGNC:6720, GIG12, LF

#### Calculated MW

85 kDa KDa

#### Application Details

WB 1:500-1:2000<br>ICC/IF 1:50-1:200<br>IP 1:50

#### Contents

Rabbit IgG in phosphate buffered saline, pH 7.4, 150mM NaCl, 0.02% sodium azide and 50% glycerol, 0.4-0.5mg/ml BSA.

#### Immunogen

A synthesized peptide derived from human Lactoferrin

#### Purification

Affinity-chromatography

Storage

**Store at -20°C for one year. For short term storage and frequent use, store at 4°C for up to one month. Avoid repeated freeze-thaw cycles.**

#### Anti-Lactoferrin Rabbit Monoclonal Antibody - Protein Information

**Name** LTF ([HGNC:6720](#))

**Synonyms** GIG12, LF

**Function**

Transferrins are iron binding transport proteins which can bind two Fe(3+) ions in association with the binding of an anion, usually bicarbonate.

**Cellular Location**

[Isoform 1]: Secreted. Cytoplasmic granule. Note=Secreted into most exocrine fluids by various endothelial cells Stored in the secondary granules of neutrophils

**Tissue Location**

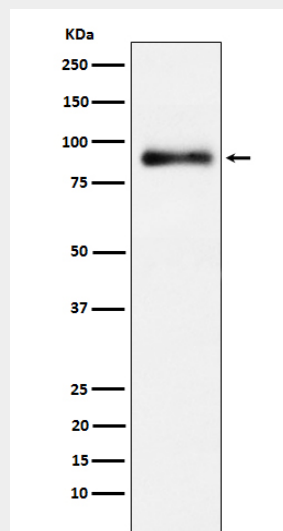
High levels are found in saliva and tears, intermediate levels in serum and plasma, and low levels in urine. In kidney, detected in the distal collecting tubules in the medulla but not in the cortical region or in blood vessels. Detected in peripheral blood neutrophils (at protein level). Isoform 1 and isoform DeltaLf are expressed in breast, prostate, spleen, pancreas, kidney, small intestine, lung, skeletal muscle, uterus, thymus and fetal liver Isoform 1 is expressed in brain, testis and peripheral blood leukocytes; isoform DeltaLf is barely detectable in these tissues Isoform DeltaLf is expressed in placenta, liver and ovary; isoform 1 is barely detectable in these tissues. In kidney, isoform 1 is expressed at high levels in the collecting tubules of the medulla but at very low levels in the cortex.

**Anti-Lactoferrin Rabbit Monoclonal Antibody - Protocols**

Provided below are standard protocols that you may find useful for product applications.

- [Western Blot](#)
- [Blocking Peptides](#)
- [Dot Blot](#)
- [Immunohistochemistry](#)
- [Immunofluorescence](#)
- [Immunoprecipitation](#)
- [Flow Cytometry](#)
- [Cell Culture](#)

**Anti-Lactoferrin Rabbit Monoclonal Antibody - Images**



Western blot analysis of Lactoferrin expression in HeLa cell lysate.