

Anti-GPA33 Rabbit Monoclonal Antibody
Catalog # ABO15622**Specification**

Anti-GPA33 Rabbit Monoclonal Antibody - Product Information

Application	WB, IHC, IP
Primary Accession	Q99795
Host	Rabbit
Isotype	IgG
Reactivity	Human
Clonality	Monoclonal
Format	Liquid

Description

Anti-GPA33 Rabbit Monoclonal Antibody . Tested in WB, IHC, IP applications. This antibody reacts with Human.

Anti-GPA33 Rabbit Monoclonal Antibody - Additional Information

Gene ID 10223

Other Names

Cell surface A33 antigen, Glycoprotein A33, GPA33

Calculated MW

50 kDa KDa

Application Details

WB 1:500-1:2000
IHC 1:50-1:200
IP 1:50

Contents

Rabbit IgG in phosphate buffered saline, pH 7.4, 150mM NaCl, 0.02% sodium azide and 50% glycerol, 0.4-0.5mg/ml BSA.

Immunogen

A synthesized peptide derived from human GPA33

Purification

Affinity-chromatography

Storage

Store at -20°C for one year. For short term storage and frequent use, store at 4°C for up to one month. Avoid repeated freeze-thaw cycles.

Anti-GPA33 Rabbit Monoclonal Antibody - Protein Information

Name GPA33

Function

May play a role in cell-cell recognition and signaling.

Cellular Location

Membrane; Single-pass type I membrane protein.

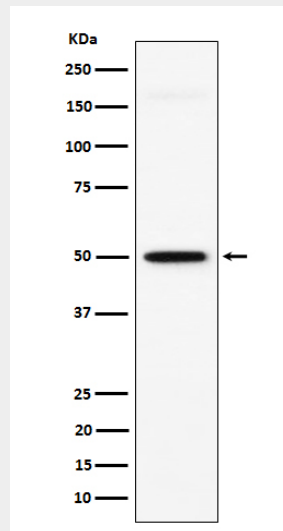
Tissue Location

Expressed in normal gastrointestinal epithelium and in 95% of colon cancers

Anti-GPA33 Rabbit Monoclonal Antibody - Protocols

Provided below are standard protocols that you may find useful for product applications.

- [Western Blot](#)
- [Blocking Peptides](#)
- [Dot Blot](#)
- [Immunohistochemistry](#)
- [Immunofluorescence](#)
- [Immunoprecipitation](#)
- [Flow Cytometry](#)
- [Cell Culture](#)

Anti-GPA33 Rabbit Monoclonal Antibody - Images

Western blot analysis of GPA33 expression in HT-29 cell lysate.