

## Anti-APRIL Rabbit Monoclonal Antibody Catalog # ABO15618

### Specification

---

#### Anti-APRIL Rabbit Monoclonal Antibody - Product Information

Application	WB, IF, ICC
Primary Accession	<a href="#">O75888</a>
Host	Rabbit
Isotype	IgG
Reactivity	Rat, Human, Mouse
Clonality	Monoclonal
Format	Liquid

#### Description

Anti-APRIL Rabbit Monoclonal Antibody . Tested in WB, ICC/IF applications. This antibody reacts with Human, Mouse, Rat.

#### Anti-APRIL Rabbit Monoclonal Antibody - Additional Information

Gene ID 8741

#### Other Names

Tumor necrosis factor ligand superfamily member 13, A proliferation-inducing ligand, APRIL, TNF- and APOL-related leukocyte expressed ligand 2, TALL-2, TNF-related death ligand 1, TRDL-1, CD256, TNFSF13, APRIL, TALL2, ZTNF2

#### Calculated MW

35 kDa KDa

#### Application Details

WB 1:500-1:2000<br>ICC/IF 1:50-1:200

#### Contents

Rabbit IgG in phosphate buffered saline, pH 7.4, 150mM NaCl, 0.02% sodium azide and 50% glycerol, 0.4-0.5mg/ml BSA.

#### Immunogen

A synthesized peptide derived from human APRIL

#### Purification

Affinity-chromatography

#### Storage

Store at -20°C for one year. For short term storage and frequent use, store at 4°C for up to one month. Avoid repeated freeze-thaw cycles.

#### Anti-APRIL Rabbit Monoclonal Antibody - Protein Information

**Name** TNFSF13

**Synonyms** APRIL, TALL2, ZTNF2

**Function**

Cytokine that binds to TNFRSF13B/TACI and to TNFRSF17/BCMA. Plays a role in the regulation of tumor cell growth. May be involved in monocyte/macrophage-mediated immunological processes.

**Cellular Location**

Secreted.

**Tissue Location**

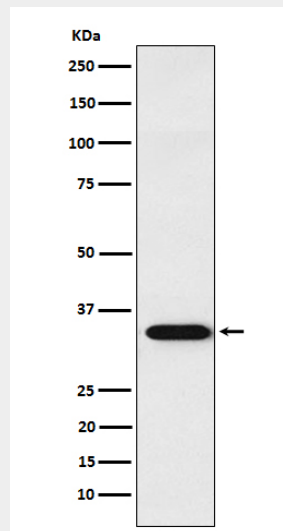
Expressed at high levels in transformed cell lines, cancers of colon, thyroid, lymphoid tissues and specifically expressed in monocytes and macrophages

**Anti-APRIL Rabbit Monoclonal Antibody - Protocols**

Provided below are standard protocols that you may find useful for product applications.

- [Western Blot](#)
- [Blocking Peptides](#)
- [Dot Blot](#)
- [Immunohistochemistry](#)
- [Immunofluorescence](#)
- [Immunoprecipitation](#)
- [Flow Cytometry](#)
- [Cell Culture](#)

**Anti-APRIL Rabbit Monoclonal Antibody - Images**



Western blot analysis of APRIL expression in Jurkat cell lysate.