

**Anti-Plastin L Rabbit Monoclonal Antibody**  
Catalog # ABO15616

**Specification**

---

**Anti-Plastin L Rabbit Monoclonal Antibody - Product Information**

Application	WB, IHC, IF, ICC, IP, FC
Primary Accession	<a href="#">P13796</a>
Host	Rabbit
Isotype	IgG
Reactivity	Human
Clonality	Monoclonal
Format	Liquid

**Description**

Anti-Plastin L Rabbit Monoclonal Antibody . Tested in WB, IHC, ICC/IF, IP, Flow Cytometry applications. This antibody reacts with Human.

**Anti-Plastin L Rabbit Monoclonal Antibody - Additional Information**

**Gene ID** 3936

**Other Names**

Plastin-2, L-plastin, LC64P, Lymphocyte cytosolic protein 1, LCP-1, LCP1, PLS2

**Calculated MW**

70 kDa KDa

**Application Details**

WB 1:500-1:2000<br>IHC 1:50-1:200<br>ICC/IF 1:50-1:200<br>IP 1:50<br>FC 1:50

**Contents**

Rabbit IgG in phosphate buffered saline, pH 7.4, 150mM NaCl, 0.02% sodium azide and 50% glycerol, 0.4-0.5mg/ml BSA.

**Immunogen**

A synthesized peptide derived from human Plastin L

**Purification**

Affinity-chromatography

**Storage**

**Store at -20°C for one year. For short term storage and frequent use, store at 4°C for up to one month. Avoid repeated freeze-thaw cycles.**

**Anti-Plastin L Rabbit Monoclonal Antibody - Protein Information**

**Name** LCP1

## Synonyms PLS2

### Function

Actin-binding protein (PubMed:<a href="http://www.uniprot.org/citations/16636079" target="\_blank">16636079</a>, PubMed:<a href="http://www.uniprot.org/citations/17294403" target="\_blank">17294403</a>, PubMed:<a href="http://www.uniprot.org/citations/28493397" target="\_blank">28493397</a>). Plays a role in the activation of T-cells in response to costimulation through TCR/CD3 and CD2 or CD28 (PubMed:<a href="http://www.uniprot.org/citations/17294403" target="\_blank">17294403</a>). Modulates the cell surface expression of IL2RA/CD25 and CD69 (PubMed:<a href="http://www.uniprot.org/citations/17294403" target="\_blank">17294403</a>).

### Cellular Location

Cytoplasm, cytoskeleton. Cell junction. Cell projection. Cell projection, ruffle membrane {ECO:0000250|UniProtKB:Q61233, ECO:0000269|PubMed:16636079}; Peripheral membrane protein {ECO:0000250|UniProtKB:Q61233}; Cytoplasmic side {ECO:0000250|UniProtKB:Q61233}. Note=Relocalizes to the immunological synapse between peripheral blood T-lymphocytes and antibody-presenting cells in response to costimulation through TCR/CD3 and CD2 or CD28 (PubMed:17294403). Associated with the actin cytoskeleton at membrane ruffles. Relocalizes to actin-rich cell projections upon serine phosphorylation (PubMed:16636079). {ECO:0000250|UniProtKB:Q61233, ECO:0000269|PubMed:16636079, ECO:0000269|PubMed:17294403}

### Tissue Location

Detected in intestinal microvilli, hair cell stereocilia, and fibroblast filopodia, in spleen and other lymph node- containing organs. Expressed in peripheral blood T-lymphocytes, neutrophils, monocytes, B-lymphocytes, and myeloid cells

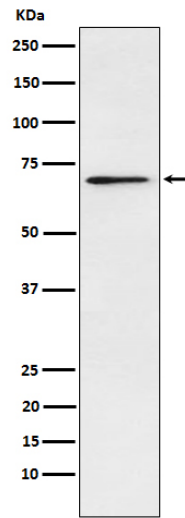
## Anti-Plastin L Rabbit Monoclonal Antibody - Protocols

Provided below are standard protocols that you may find useful for product applications.

- [Western Blot](#)
- [Blocking Peptides](#)
- [Dot Blot](#)
- [Immunohistochemistry](#)
- [Immunofluorescence](#)
- [Immunoprecipitation](#)
- [Flow Cytometry](#)
- [Cell Culture](#)

## Anti-Plastin L Rabbit Monoclonal Antibody - Images





Western blot analysis of Plastin L expression in Jurkat cell lysate.