

Anti-ENTPD5 Rabbit Monoclonal Antibody
Catalog # ABO15615

Specification

Anti-ENTPD5 Rabbit Monoclonal Antibody - Product Information

Application	WB, IHC, IP
Primary Accession	O75356
Host	Rabbit
Isotype	IgG
Reactivity	Rat, Human, Mouse
Clonality	Monoclonal
Format	Liquid

Description

Anti-ENTPD5 Rabbit Monoclonal Antibody . Tested in WB, IHC, IP applications. This antibody reacts with Human, Mouse, Rat.

Anti-ENTPD5 Rabbit Monoclonal Antibody - Additional Information

Gene ID 957

Other Names

Nucleoside diphosphate phosphatase ENTPD5, 3.6.1.6, CD39 antigen-like 4, ER-UDPase, Ectonucleoside triphosphate diphosphohydrolase 5 {ECO:0000312|HGNC:HGNC:3367}, NTPDase 5, Guanosine-diphosphatase ENTPD5, GDPase ENTPD5, Inosine diphosphate phosphatase ENTPD5, Nucleoside diphosphatase, Uridine-diphosphatase ENTPD5, UDPase ENTPD5, ENTPD5 ([HGNC:3367](http://www.genenames.org/cgi-bin/gene_symbol_report?hgnc_id=3367))

Calculated MW

47 kDa KDa

Application Details

WB 1:500-1:2000
IHC 1:50-1:200
IP 1:50

Contents

Rabbit IgG in phosphate buffered saline, pH 7.4, 150mM NaCl, 0.02% sodium azide and 50% glycerol, 0.4-0.5mg/ml BSA.

Immunogen

A synthesized peptide derived from human ENTPD5

Purification

Affinity-chromatography

Storage

Store at -20°C for one year. For short term storage and frequent use, store at 4°C for up to one month. Avoid repeated freeze-thaw cycles.

Anti-ENTPD5 Rabbit Monoclonal Antibody - Protein Information

Name ENTPD5 ([HGNC:3367](#))

Function

Hydrolyzes nucleoside diphosphates with a preference for GDP, IDP and UDP compared to ADP and CDP (PubMed:10400613, PubMed:15698960). In the lumen of the endoplasmic reticulum, hydrolyzes UDP that acts as an end-product feedback inhibitor of the UDP-Glc:glycoprotein glycosyltransferases. UMP can be transported back by an UDP-sugar antiporter to the cytosol where it is consumed to regenerate UDP- glucose. Therefore, it positively regulates protein reglucosylation by clearing UDP from the ER lumen and by promoting the regeneration of UDP-glucose. Protein reglucosylation is essential to proper glycoprotein folding and quality control in the ER (By similarity).

Cellular Location

Endoplasmic reticulum {ECO:0000250|UniProtKB:Q9WUZ9}. Secreted

Tissue Location

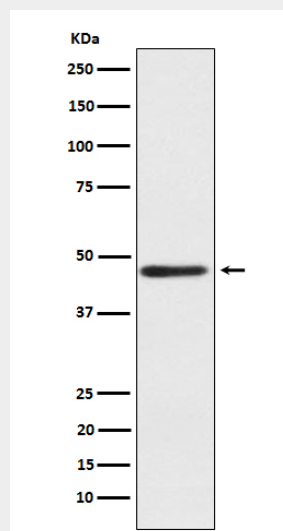
Expressed in adult liver, kidney, prostate, testis and colon. Much weaker expression in other tissues

Anti-ENTPD5 Rabbit Monoclonal Antibody - Protocols

Provided below are standard protocols that you may find useful for product applications.

- [Western Blot](#)
- [Blocking Peptides](#)
- [Dot Blot](#)
- [Immunohistochemistry](#)
- [Immunofluorescence](#)
- [Immunoprecipitation](#)
- [Flow Cytometry](#)
- [Cell Culture](#)

Anti-ENTPD5 Rabbit Monoclonal Antibody - Images



Western blot analysis of ENTPD5 expression in fetal liver lysate.